

**KITO**

Functional hook design for connecting directly to steel plates including plates with small holes.

# ***Shipyard hooks***

***for use with KITO LEVER HOISTS***





# Innovative hook design.

**Allows for connecting into holes as small as 50mm in diameter!\***

Safe and easy to use.

Ideal for hooking into the small-diameter holes, drain holes and lashing holes in steel plates.

Innovative hook design.

Optimized jobsite productivity is achieved with the KITO S type shipyard hook.



**New**

**Shipyard hooks**

for use with KITO LEVER HOISTS

**S** type

\*The hook can be used in 50mm holes; however, hole shape and steel plate thickness restrictions apply.



KITO shipyard hooks have been designed and manufactured through extensive engineering, field testing, and refinement.

Try them to experience greater work productivity firsthand!

**Choose from among four hook types to match your application.**

### New S type shipyard hook for small-diameter holes 1.6t/2.5t

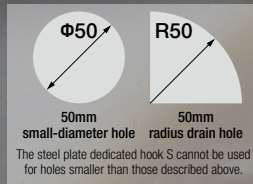
With hook latch to prevent load detaching

Steel plates and pieces

Clamps

Wire jigs

50mm small-diameter hole  
50mm radius drain hole



• This hook cannot be used for lifting applications.

### N type shipyard hook 1.6t/2.5t/3.2t

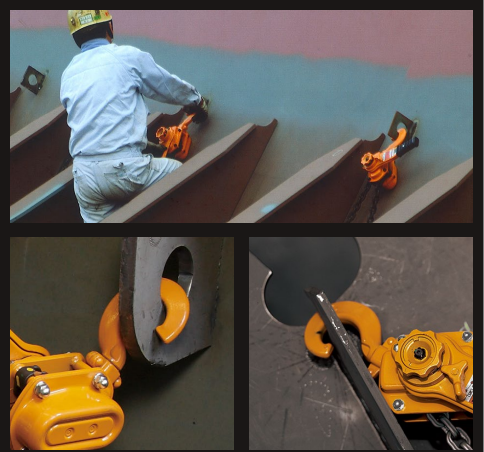
With hook latch to prevent load detaching

Steel plates and pieces

Clamps

Wire jigs

50mm small-diameter hole  
50mm radius drain hole



• This hook cannot be used for lifting applications.

### N type shipyard hook with hook latch 1.6t/3.2t

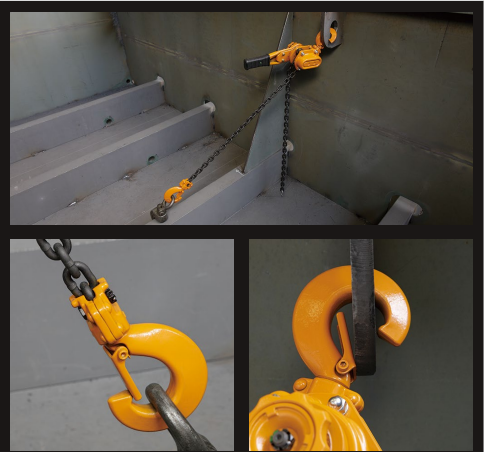
With hook latch to prevent load detaching

Steel plates and pieces

Clamps

Wire jigs

50mm small-diameter hole  
50mm radius drain hole



• This hook cannot be used for lifting applications.

### Standard hook

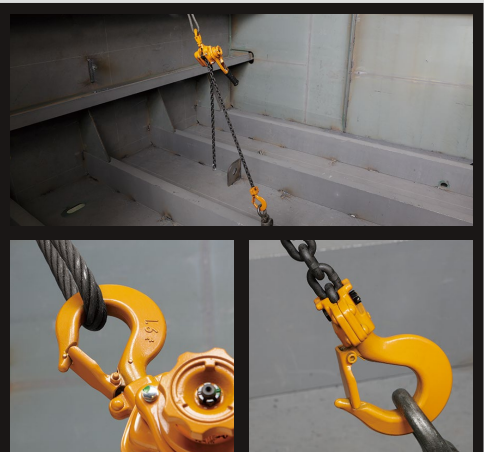
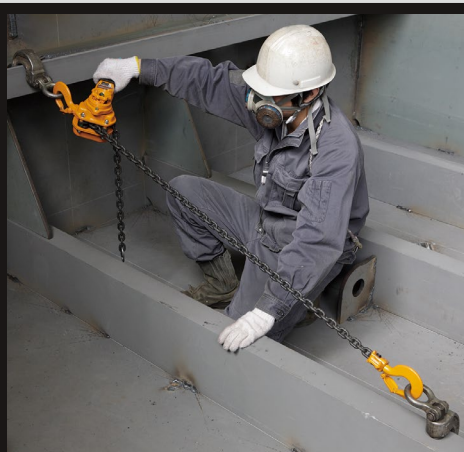
With hook latch to prevent load detaching

Steel plates and pieces

Clamps

Wire jigs

50mm small-diameter hole  
50mm radius drain hole

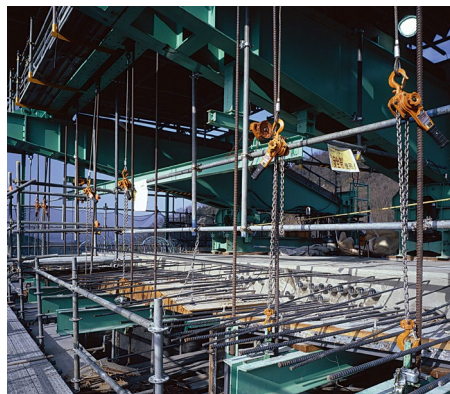
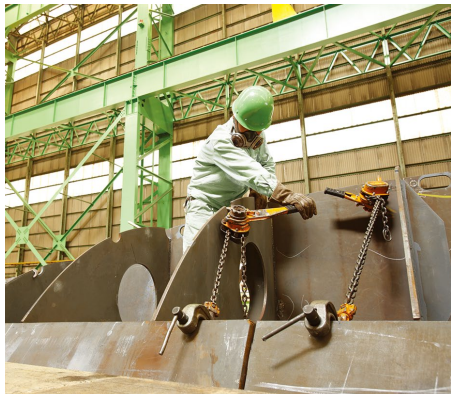


• This hook CAN be used for lifting applications.



## Dimensions (mm)

	<b>New</b> S type shipyard hook		N type shipyard hook			N type shipyard hook with hook latch		Standard hook		
	LB016	LB025	LB016	LB025	LB032	LB016	LB032	LB016	LB025	LB032
g (Opening width)	—	—	—	—	—	26.5	34	32	36.5	39
s (Internal diameter)	—	—	42	50	55	42	55	42.5	47	50
t (Thickness)	23	25	23	25	28	23	28	19	21	24.5
b (Tip height)	13	16	30	34	37	30	37	45	52	55
Maximum applicable plate thickness	20	25	20	25	30	20	30	—	—	—
Applicable hole dimensions	When using with minimum 50mm diameter holes, plate thickness cannot exceed 19mm.	When using with minimum 50mm diameter holes, plate thickness cannot exceed 12mm.	—	—	—	—	—	—	—	—
<p> <math>\text{Ø}50</math>            50mm small-diameter hole  <math>R50</math>            50mm radius drain hole            The S type shipyard hook cannot be used for holes smaller than those described above.         </p>										



- The functions and performance of the products mentioned in the catalog have been designed based on the related regulations and standards. If they are used for other than their intended purposes such as being integrated into your equipment, we will not take any responsibility for accidents attributable to their unintended usages as well as guarantee their performance and functions. Never remodel our products.
- When you want to use our products for special purposes, consult us in advance.
- When you want to export our products, consult us in advance. There are different standards and regulations from one destination to another.
- It is prohibited to reprint, copy or divert all the information in this catalog (product patents, trademarks, photos, designs, copies, illustrations, etc.) without our consent.
- The specifications in this catalog are partly subject to change without prior notice.
- Product specifications may vary depending on the country. For more details please contact the nearest KITO dealer.

# KITO

**KITO CORPORATION**

SHINJUKU NS Bldg. 9F, 2-4-1 Nishi-Shinjuku, Shinjuku-ku, Tokyo 163-0809 JAPAN  
 TEL: +81-3-5908-0180 FAX: +81-3-5908-0189  
[www.kito.co.jp](http://www.kito.co.jp)

Distributed by: