

KITO RY Series Wire Rope Hoist

Technical Guide

- Model List P2
- Standard Specification P2
- Product Code P2
- Intermittent Rating and Start-up Frequency P3
- Grade of Lifting Device, etc. P3
- Specification List P4
- Dimension Table P5
- Technical Materials P6-7
 - Stopper dimension table
 - Hook dimension table
 - Rated current
 - Permissible Cable Length
- Safety Precautions P7
- KITO Global Network P8

KITO RY Series Wire Rope Hoist

Model List

| Model | Lifting Speed | | Capacity (t) | | Flange Width (mm) | | |
|-----------------------|---------------------|----------------|--------------|-------|-------------------|---------|---------|
| | | | 2.8/3/3.2 | 4.8/5 | 125-175 | 176-350 | 351-500 |
| Low Headroom Type RYL | Dual Speed Inverter | Standard Speed | ● | ● | ● | Option | Option |
| | | High Speed | | | | | |

Standard Specification

| | |
|-------------------------|---|
| Power Supply | 3Phase 200 - 230V 50/60Hz 3Phase 380 - 460V 50/60Hz |
| Control Voltage | DC 24V |
| Intermittent Ratings | Lifting: 60%ED (High Speed: 40%, Low Speed: 20%) 360 Starts/hr |
| Protection Construction | IP44 (IP65 for Push Button Switches) |
| Operation | Pendant Control |
| Ambient Temperature | -20°C to +40°C |
| Humidity | 90%RH or Less (No Condensation) |
| Color | KITO Yellow (Equivalent to Munsell 7.2YR6.5/14.5), KITO Metallic Gray |

Product Code

| | | | | | |
|---|--------------------------|---|--|-----------------------------|--|
| RYL A 028 IS IS 06 | | | | | |
| <u>Model</u> | <u>Base Body</u> | <u>Capacity</u> | <u>Traversing Speed</u> | <u>Standard Lift</u> | |
| RYL: Low Headroom Type RYW: Double Girder Type | A: 03 Body B: 05 Body | 028: 2.8t 030: 3t 032: 3.2t 048: 4.8t 050: 5t | IS: Dual Speed Inverter (Standard Speed) | 06: 6m 09: 9m 12: 12m | |
| | | | <u>Lifting Speed</u> | | |
| | | | IS: Dual Speed Inverter (Standard Speed) IH: Dual Speed Inverter (High Speed) | | |

KITO RY Series Wire Rope Hoist

Intermittent Rating and Start-up Frequency

$$\text{Intermittent Rating (\%ED)} = \frac{\text{Maximum Time of Operation Allowed in 1 Hour (min.)}}{60 \text{ min.}} \times 100$$

Start-Up Frequency = Maximum Number of Starts Allowed in 1 Hour

Hoist Classifications

ISO

| State of loading | | Total Duration of Use (h) | | | | | | | |
|------------------|--|---------------------------|-----|-----|------|------|------|-------|-------|
| | | 200 | 400 | 800 | 1600 | 3200 | 6300 | 12500 | 25000 |
| Light | Mechanisms Subjected Very Rarely to The Maximum Load and, Normally, to Light Loads | – | – | M1 | M2 | M3 | M4 | M5 | M6 |
| Moderate | Mechanisms Subjected Fairly Frequently to The Maximum Load But, Normally, To Rather Moderate Loads | – | M1 | M2 | M3 | M4 | M5 | M6 | – |
| Heavy | Mechanisms Subjected Frequently To The Maximum Load And, Normally, to Loads of Heavy Magnitude | M1 | M2 | M3 | M4 | M5 | M6 | – | – |
| Very heavy | Mechanisms Subjected Regularly to The Maximum Load | M2 | M3 | M4 | M5 | M6 | – | – | – |

This classification refers to ISO 4301-1 and applies to the mechanical components including gears and bearings except for consumable parts. The Grade Symbols Are Identical To Those Of Asme Hst-1M. (Performance Standard For Electric Chain Hoist)

KITO RY Series Wire Rope Hoist

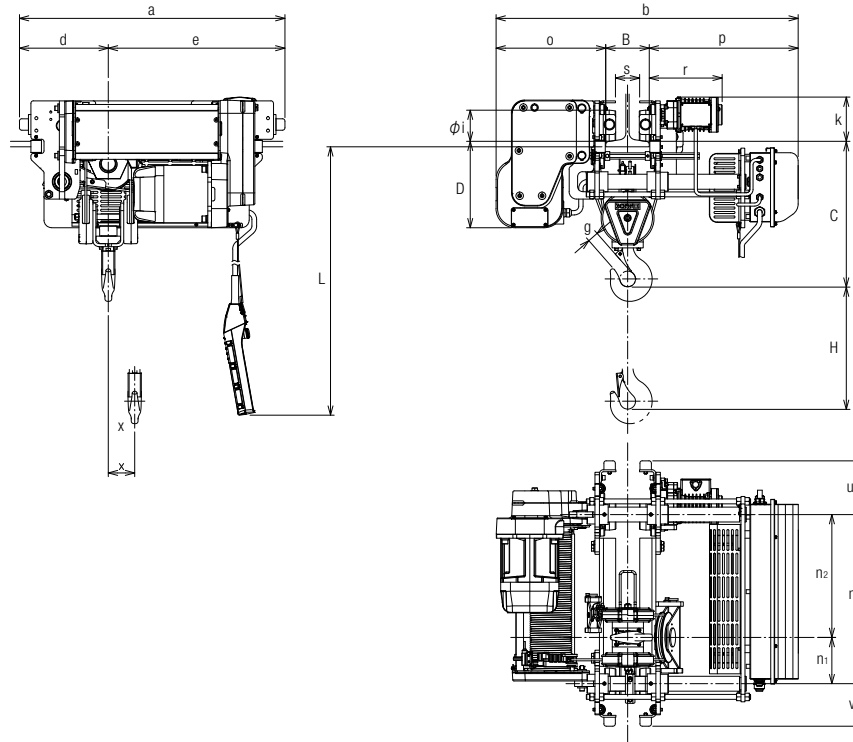
Specification List

| Capacity (t) | Product Code | Standard Lift (m) | Flange Width (mm) | Lifting: Inverter Operation | | | | Traversing: Inverter Operation | | | Wire Rope | | | Weight | |
|--------------------------------|---|-------------------|-------------------|----------------------------------|----------------------------------|-------------------|-------------------------------|--------------------------------|------------------------------|--------------------------------|--|--|---------|------------------------------|-----------|
| | | | | Motor | | Speed | | Motor | | Speed | Rope Diameter (mm) | Number of Falls | Reeving | Main Unit (kg) ^{*2} | Hook (kg) |
| | | | | Output (kW) | Intermittent Rating (%ED) | With a Rated Load | With a ^{*1} Low Load | Output (kW) | Intermittent Rating (%ED) | High and Low Speed m/s (m/min) | | | | | |
| 2.8 3 3.2 | RYLA028ISIS06 RYLA030ISIS06 RYLA032ISIS06 | 6 | 125 to 175 | 3.5 | 0.083 to 0.014 (5.0 to 0.833) | 0.125 (7.5) | 0.25 | 20/10 | 0.33 to 0.056 (20 to 3.3) | Ø8 | 4/1 | 6 x Fi(29) B type JIS G 3525 1770N/mm ² (Standard wire rope) | 375 | 30 | |
| | | | 176 to 350 | | | | | | | | | | 380 | | |
| | | | 351 to 500 | | | | | | | | | | 385 | | |
| | RYLA028IHIS06 RYLA030IHIS06 RYLA032IHIS06 | 6 | 125 to 175 | 5.0 | 0.133 to 0.022 (8.0 to 1.333) | 0.200 (12.0) | 0.25 | 20/10 | 0.33 to 0.056 (20 to 3.3) | Ø8 | 4/1 | 6 x Fi(29) B type JIS G 3525 1770N/mm ² (Standard wire rope) | 375 | 30 | |
| | | | 176 to 350 | | | | | | | | | | 380 | | |
| | | | 351 to 500 | | | | | | | | | | 385 | | |
| | RYLA028ISIS09 RYLA030ISIS09 RYLA032ISIS09 | 9 | 125 to 175 | 3.5 | 0.083 to 0.014 (5.0 to 0.833) | 0.125 (7.5) | 0.25 | 20/10 | 0.33 to 0.056 (20 to 3.3) | Ø8 | 4/1 | 6 x Fi(29) B type JIS G 3525 1770N/mm ² (Standard wire rope) | 405 | 30 | |
| | | | 176 to 350 | | | | | | | | | | 410 | | |
| | | | 351 to 500 | | | | | | | | | | 415 | | |
| | RYLA028IHIS09 RYLA030IHIS09 RYLA032IHIS09 | 9 | 125 to 175 | 5.0 | 0.133 to 0.022 (8.0 to 1.333) | 0.200 (12.0) | 0.25 | 20/10 | 0.33 to 0.056 (20 to 3.3) | Ø8 | 4/1 | 6 x Fi(29) B type JIS G 3525 1770N/mm ² (Standard wire rope) | 405 | 30 | |
| | | | 176 to 350 | | | | | | | | | | 410 | | |
| | | | 351 to 500 | | | | | | | | | | 415 | | |
| 4.8 5 | RYLA028ISIS12 RYLA030ISIS12 RYLA032ISIS12 | 12 | 125 to 175 | 3.5 | 0.083 to 0.014 (5.0 to 0.833) | 0.125 (7.5) | 0.25 | 20/10 | 0.33 to 0.056 (20 to 3.3) | Ø8 | 4/1 | 6 x P/WS(26) Compliant with JIS G 3546 2160N/mm ² (High-strength wire rope) | 440 | 35 | |
| | | | 176 to 350 | | | | | | | | | | 445 | | |
| | | | 351 to 500 | | | | | | | | | | 450 | | |
| | RYLA028IHIS12 RYLA030IHIS12 RYLA032IHIS12 | 12 | 125 to 175 | 5.0 | 0.133 to 0.022 (8.0 to 1.333) | 0.200 (12.0) | 0.25 | 20/10 | 0.33 to 0.056 (20 to 3.3) | Ø8 | 4/1 | 6 x P/WS(26) Compliant with JIS G 3546 2160N/mm ² (High-strength wire rope) | 440 | 35 | |
| | | | 176 to 350 | | | | | | | | | | 445 | | |
| | | | 351 to 500 | | | | | | | | | | 450 | | |
| 4.8 5 | RYLB048ISIS06 RYLB050ISIS06 | 6 | 125 to 175 | 5.0 | 0.083 to 0.014 (5.0 to 0.833) | 0.125 (7.5) | 0.4 | 20/10 | 0.33 to 0.056 (20 to 3.3) | Ø8 | 4/1 | 6 x P/WS(26) Compliant with JIS G 3546 2160N/mm ² (High-strength wire rope) | 395 | 35 | |
| | | | 176 to 350 | | | | | | | | | | 400 | | |
| | | | 351 to 500 | | | | | | | | | | 405 | | |
| | RYLB048IHIS06 RYLB050IHIS06 | 6 | 125 to 175 | 8.0 | 0.133 to 0.022 (8.0 to 1.333) | 0.200 (12.0) | 0.4 | 20/10 | 0.33 to 0.056 (20 to 3.3) | Ø8 | 4/1 | 6 x P/WS(26) Compliant with JIS G 3546 2160N/mm ² (High-strength wire rope) | 415 | 35 | |
| | | | 176 to 350 | | | | | | | | | | 420 | | |
| | | | 351 to 500 | | | | | | | | | | 425 | | |
| RYLB048ISIS09 RYLB050ISIS09 | 9 | 125 to 175 | 5.0 | 0.083 to 0.014 (5.0 to 0.833) | 0.125 (7.5) | 0.4 | 20/10 | 0.33 to 0.056 (20 to 3.3) | Ø8 | 4/1 | 6 x P/WS(26) Compliant with JIS G 3546 2160N/mm ² (High-strength wire rope) | 425 | 35 | | |
| | | 176 to 350 | | | | | | | | | | 430 | | | |
| | | 351 to 500 | | | | | | | | | | 435 | | | |
| RYLB048IHIS09 RYLB050IHIS09 | 9 | 125 to 175 | 8.0 | 0.133 to 0.022 (8.0 to 1.333) | 0.200 (12.0) | 0.4 | 20/10 | 0.33 to 0.056 (20 to 3.3) | Ø8 | 4/1 | 6 x P/WS(26) Compliant with JIS G 3546 2160N/mm ² (High-strength wire rope) | 445 | 35 | | |
| | | 176 to 350 | | | | | | | | | | 450 | | | |
| | | 351 to 500 | | | | | | | | | | 455 | | | |
| 4.8 5 | RYLB048ISIS12 RYLB050ISIS12 | 12 | 125 to 175 | 5.0 | 0.083 to 0.014 (5.0 to 0.833) | 0.125 (7.5) | 0.4 | 20/10 | 0.33 to 0.056 (20 to 3.3) | Ø8 | 4/1 | 6 x P/WS(26) Compliant with JIS G 3546 2160N/mm ² (High-strength wire rope) | 460 | 35 | |
| | | | 176 to 350 | | | | | | | | | | 465 | | |
| | | | 351 to 500 | | | | | | | | | | 470 | | |
| | RYLB048IHIS12 RYLB050IHIS12 | 12 | 125 to 175 | 8.0 | 0.133 to 0.022 (8.0 to 1.333) | 0.200 (12.0) | 0.4 | 20/10 | 0.33 to 0.056 (20 to 3.3) | Ø8 | 4/1 | 6 x P/WS(26) Compliant with JIS G 3546 2160N/mm ² (High-strength wire rope) | 480 | 35 | |
| | | | 176 to 350 | | | | | | | | | | 485 | | |
| | | | 351 to 500 | | | | | | | | | | 490 | | |

*1: Lifting/lowering a load less than 25% of the rated capacity at a speed of 1.5 times the high speed (this function may be turned off).

*2: The weight of the main unit includes the weight of the hook.

KITO RY Series Wire Rope Hoist



Dimension Table (mm)

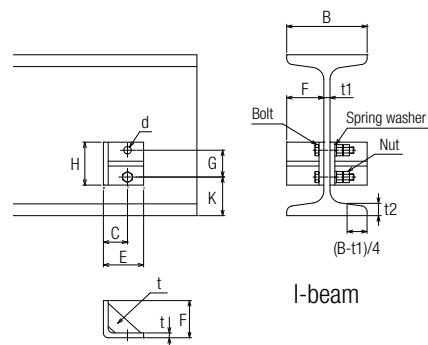
| Capacity (t) | Product Code | Standard Lift H (m) | Flange Width B (mm) | C | D | L | a | b | d | e | g | i | k | n | n ₁ | n ₂ | o | p | r | s | u | v | x | | | | | |
|-----------------|---------------|---------------------|---------------------|-----|-----|------|------|------------|-----|-----|------|------|------|-----|----------------|----------------|-----|------------|------------|------|------|-----|-----|-----|-----|-----|------------|------------|
| 2.8 3 3.2 | RYLA028ISIS06 | 6 | 125 to 175 | 635 | 348 | 8700 | 1067 | 1215 | 357 | 922 | 43 | Ø125 | 178 | 892 | 186 | 706 | 441 | 649 to 599 | 293 | B-80 | 216 | 171 | 160 | 106 | | | | |
| | RYLA028IHIS06 | | 176 to 350 | | | | | 1390 | | | | | | | | | | 710 | | | | | | | 680 | 494 | 773 to 599 | |
| | RYLA030ISIS06 | | 351 to 500 | | | | | 1540 | | | | | | | | | | 748 to 599 | | | | | | | | | | |
| | RYLA032ISIS06 | | | | | | | | | | | | | | | | | | | | | | | | | | | |
| | RYLA032IHIS06 | | | | | | | | | | | | | | | | | | | | | | | | | | | |
| | RYLA028ISIS09 | 9 | 125 to 175 | 650 | 348 | 8700 | 1279 | 1215 | 357 | 922 | 45 | Ø125 | 186 | 892 | 186 | 706 | 441 | 649 to 599 | 342 | B-80 | 216 | 171 | 160 | 106 | | | | |
| | RYLA028IHIS09 | | 176 to 350 | | | | | 1390 | | | | | | | | | | 710 | | | | | | | 680 | 494 | 773 to 599 | |
| | RYLA030ISIS09 | | 351 to 500 | | | | | 1540 | | | | | | | | | | 748 to 599 | | | | | | | | | | |
| | RYLA032ISIS09 | | | | | | | | | | | | | | | | | | | | | | | | | | | |
| | RYLA032IHIS09 | | | | | | | | | | | | | | | | | | | | | | | | | | | |
| | RYLA028ISIS12 | 12 | 125 to 175 | 650 | 348 | 8700 | 1491 | 1215 | 357 | 922 | 1134 | 45 | Ø125 | 186 | 892 | 186 | 706 | 441 | 649 to 599 | 342 | B-80 | 216 | 171 | 160 | 106 | | | |
| | RYLA028IHIS12 | | 176 to 350 | | | | | 1390 | | | | | | | | | | | 710 | | | | | | | 680 | 494 | 773 to 599 |
| RYLA030ISIS12 | 351 to 500 | | 1540 | | | | | 748 to 599 | | | | | | | | | | | | | | | | | | | | |
| RYLA032ISIS12 | | | | | | | | | | | | | | | | | | | | | | | | | | | | |
| RYLA032IHIS12 | | | | | | | | | | | | | | | | | | | | | | | | | | | | |
| 4.8 5 | RYLB048ISIS06 | 6 | 125 to 175 | 650 | 348 | 8700 | 1067 | 1215 | 357 | 922 | 45 | Ø125 | 186 | 892 | 186 | 706 | 441 | 649 to 599 | 342 | B-80 | 216 | 171 | 160 | 106 | | | | |
| | RYLB048IHIS06 | | 176 to 350 | | | | | 1390 | | | | | | | | | | 710 | | | | | | | 680 | 494 | 773 to 599 | |
| | RYLB050ISIS06 | | 351 to 500 | | | | | 1540 | | | | | | | | | | 748 to 599 | | | | | | | | | | |
| | RYLB050IHIS06 | | | | | | | | | | | | | | | | | | | | | | | | | | | |
| | RYLB048ISIS09 | 9 | 125 to 175 | 650 | 348 | 8700 | 1279 | 1215 | 357 | 922 | 45 | Ø125 | 186 | 892 | 186 | 706 | 441 | 649 to 599 | 342 | B-80 | 216 | 171 | 160 | 106 | | | | |
| | RYLB048IHIS09 | | 176 to 350 | | | | | 1390 | | | | | | | | | | 710 | | | | | | | 680 | 494 | 773 to 599 | |
| | RYLB050ISIS09 | | 351 to 500 | | | | | 1540 | | | | | | | | | | 748 to 599 | | | | | | | | | | |
| | RYLB050IHIS09 | | | | | | | | | | | | | | | | | | | | | | | | | | | |
| | RYLB048ISIS12 | 12 | 125 to 175 | 650 | 348 | 8700 | 1491 | 1215 | 357 | 922 | 1134 | 45 | Ø125 | 186 | 892 | 186 | 706 | 441 | 649 to 599 | 342 | B-80 | 216 | 171 | 160 | 106 | | | |
| | RYLB048IHIS12 | | 176 to 350 | | | | | 1390 | | | | | | | | | | | 710 | | | | | | | 680 | 494 | 773 to 599 |
| | RYLB050ISIS12 | | 351 to 500 | | | | | 1540 | | | | | | | | | | | 748 to 599 | | | | | | | | | |
| | RYLB050IHIS12 | | | | | | | | | | | | | | | | | | | | | | | | | | | |

•Select the flange width when purchasing the product.

Technical Materials

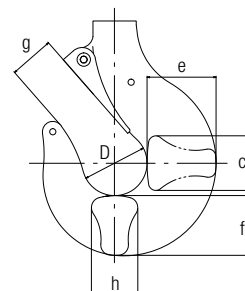
Stopper Dimension Table (mm)

| Product Code | F | Selection | H | E | G | C | B | t | K | Ød |
|--|---|-----------|------|------|----|---------|------------|---|-------|---------|
| RYLA028ISIS RYLA028IHIS RYLA030ISIS RYLA030IHIS RYLA032ISIS RYLA032IHIS | (B-t1)/2 Rounded Down to a Whole Number | F≤90 | 80 | C+25 | 50 | 40 | 125 to 500 | 9 | t2+60 | 14(M12) |
| F>90 | | 100 | C+30 | 60 | 45 | 18(M16) | | | | |
| RYLB048ISIS RYLB048IHIS RYLB050ISIS RYLB050IHIS | (B-t1)/2 Rounded Down to a Whole Number | F≤90 | 100 | C+30 | 60 | 45 | 125 to 500 | 9 | t2+60 | 18(M16) |
| F>90 | | 110 | C+35 | 65 | 50 | 22(M20) | | | | |



Hook Dimension Table (mm)

| Product Code | D | g | h | f | e | c |
|--|----|----|----|----|----|----|
| RYLA028ISIS RYLA028IHIS RYLA030ISIS RYLA030IHIS RYLA032ISIS RYLA032IHIS | 63 | 43 | 45 | 58 | 67 | 53 |
| RYLB048ISIS RYLB048IHIS RYLB050ISIS RYLB050IHIS | 71 | 45 | 53 | 67 | 80 | 63 |



Rated Current (A)

| Capacity (t) | Product Code | 200-230V | | 380-460V | |
|-----------------|--|---------------|------------------|---------------|------------------|
| | | 50Hz/60Hz | | 50Hz/60Hz | |
| | | Lifting Motor | Traversing Motor | Lifting Motor | Traversing Motor |
| 2.8 3 3.2 | RYLA028ISIS RYLA030ISIS RYLA032ISIS RYLA028IHIS RYLA030IHIS RYLA032IHIS | 18.0 | 1.6 | 9.5 | 0.8 |
| | | 29.5 | 1.6 | 15.0 | 0.8 |
| 4.8 5 | RYLB048ISIS RYLB050ISIS RYLB048IHIS RYLB050IHIS | 29.5 | 2.0 | 15.0 | 1.0 |
| | | 46.0 | 2.0 | 24.0 | 1.0 |

Technical Materials

Permissible Cable Length

| 200V Grade | | | | | | | | |
|-----------------|---|-------------------------------|------------------------------|---------|---------|---------|---------|---------|
| Capacity (t) | Product Code | Cable Size (mm ²) | Permissible Cable Length (m) | | | | | |
| | | | 50Hz | | 60Hz | | | |
| | | | 200V | 230V | 200V | 208V | 220V | 230V |
| 2.8 3 3.2 | RYLA028ISIS RYLA030ISIS RYLA032ISIS | 5.5(8) | 36 (53) | 41 (60) | 36 (53) | 37 (55) | 40 (58) | 41 (60) |
| | RYLA028IHIS RYLA030IHIS RYLA032IHIS | 8(14) | 33 (58) | 38 (67) | 33 (58) | 34 (60) | 36 (64) | 38 (67) |
| 4.8 5 | RYLB048ISIS RYLB050ISIS | 8(14) | 32 (57) | 37 (66) | 32 (57) | 34 (60) | 36 (63) | 37 (66) |
| | RYLB050IHIS RYLB050IHIS | 14(22) | 37 (59) | 43 (68) | 37 (59) | 39 (61) | 41 (65) | 43 (68) |

| 400V Grade | | | | | | | | | |
|-----------------|---|-------------------------------|------------------------------|---------|---------|---------|---------|---------|----------|
| Capacity (t) | Product Code | Cable Size (mm ²) | Permissible Cable Length (m) | | | | | | |
| | | | 50Hz | | 60Hz | | | | |
| | | | 380V | 400V | 415V | 380V | 400V | 440V | 460V |
| 2.8 3 3.2 | RYLA028ISIS RYLA030ISIS RYLA032ISIS | 2 (3.5) | 47 (83) | 50 (88) | 52 (91) | 47 (83) | 50 (88) | 55 (97) | 58 (101) |
| | RYLA028IHIS RYLA030IHIS RYLA032IHIS | 3.5 (5.5) | 54 (85) | 57 (90) | 59 (93) | 54 (85) | 57 (90) | 63 (99) | 66 (103) |
| 4.8 5 | RYLB048ISIS RYLB050ISIS | 3.5 (5.5) | 53 (84) | 56 (89) | 58 (92) | 53 (84) | 56 (89) | 62 (98) | 65 (102) |
| | RYLB048IHIS RYLB050IHIS | 5.5 (8) | 54 (78) | 57 (83) | 59 (86) | 54 (78) | 57 (83) | 62 (91) | 65 (95) |

Safety Precautions

1. Installation

Installation of the hoist must be carried out only by a professional or a qualified personnel.

- Install the hoist only in an environment in which the hoist is intended for.
- Be sure to create a proper grounding connection.
- Be sure to attach stoppers at the ends of the trolley and crane beams.
- Make sure that the structural strength is sufficient at the site of installation.
- Do not modify the product and its accessories.

2. Regulation on use

Do not perform the following legally prohibited actions.

- Lifting more than rated load for the hoist.
- Lifting, supporting or transporting people.
- Lifting or supporting loads over people.

3. Selection of a model

Make sure to carefully check the listed specifications to select a model.

Consult KITO for specifications not covered in this guide.

- Ensure that the voltage of the power supply is proper for the hoist.
- Do not operate the hoist beyond its duty rating (intermittent rating and start-up frequency).

4. Legal requirements regarding inspection

The following actions are required for users of the hoist.

- Implementation of daily inspection.
- Implementation of monthly and yearly self-inspection.
- Storage of the monthly and yearly self-inspection record for three years.

5. Other

- Make sure to understand the information and the warnings in the Owner's Manual provided with the product before use.

KITO



Head Office & Factory

2000 Tsuijiarai Showa-Cho, Nakakoma-Gun, Yamanashi 409-3853, Japan
TEL: +81-55-275-7521 FAX: +81-55-275-6162

Tokyo Head Office

SHINJUKU NS Bldg. 9F, 2-4-1 Nishi-Shinjuku, Shinjuku-ku, Tokyo 163-0809, Japan
TEL: +81-3-5908-0180 FAX: +81-3-5908-0189
www.kito.co.jp/en KITO Global Website: kito.com



www.kito.co.jp

Global Website: kito.com

International Sales Subsidiaries

U.S.A.

Harrington Hoists, Inc.

401 West End Avenue, Manheim, PA 17545, U.S.A.
TEL: +1-717-665-2000 FAX: +1-717-665-2861
www.harringtonhoists.com/

PEERLESS INDUSTRIAL GROUP, INC.

1416 East Sanborn St. Winona, MN 55987, U.S.A.
TEL: +1-800-873-1916 FAX: +1-800-356-1149
www.peerlesschain.com/

CANADA

KITO CANADA INC.

309-3815 1st Ave., Burnaby, BC V5C 3V6, Canada
TEL: +1-604-291-9955 FAX: +1-604-294-8855
www.kito.ca/

BRAZIL

KITO DO BRASIL COMÉRCIO DE TALHAS E GUINDASTES LTDA

Unidade 38 do CLE – CENTRO LOGÍSTICO EMBU
Rua José Semião Rodrigues Agostinho, 1370,
Bairro Água Espraiada – Embu das Artes, SP, Brasil
TEL: +55-11-3253-1000 FAX: +55-11-3253-1008
http://www.kito.com/br/

GERMANY

Kito Europe GmbH

Heerdter Lohweg 93, D-40549 Düsseldorf, Germany
TEL: +49-(0)211-528009-00 FAX: +49-(0)211-528009-59
www.kito.net/

ITALIA

Kito Chain Italia S.r.l.

Via Giuseppe Verdi 11, 33018, Tarvisio (Ud), Italia
TEL: +39-(0)428-4171 FAX: +39-(0)428-417301

AUSTRALIA

PWB Anchor Limited

441 Grimshaw Street, Bundoora, VIC 3083, Australia
TEL: +61-1300-792-262 FAX: +61-3-9467-7290
www.pwbanchor.com.au/

CHINA

JIANGYIN KITO CRANE CO., LTD.

18 Cheng Jiang East Road, Jiang Yin, Jiang Su 214429, China
TEL: +86-510-86199700 FAX: +86-510-86196633
www.kaicheng.com/

SHANGHAI KITO TRADING CO., LTD.

Room 11J, Zao-Fong Universe Building,
No1800 ZhongShan West Road Shanghai 200235, China
TEL: +86-21-54488935 FAX: +86-21-54488937
www.kito.com.cn/

TAIWAN

KITO TAIWAN CO., LTD.

12F-1, 128c sec. 3, Ming-Shen East Road, Taipei, Taiwan 10596
TEL: +886-2-2719-7616 FAX: +886-2-2719-6900
www.tw.kito.com/

KOREA

KITO KOREA CO., LTD.

3Dong 903, 15, Pangyo-Ro 228Beon-gil, Bundang-gu,
Seongnam-si, Gyeonggi-do, Korea 13487
TEL: +82-31-600-7450 FAX: +82-31-600-7469
www.kito.kr/

THAILAND

SIAM KITO CO., LTD.

205 M.2, T.Klongtumru, A.Muangchonburi, Chonburi 20000, Thailand
TEL: +66-3819-5711 FAX: +66-3846-8195
www.siamkito.co.th/

INDIA

Armsel MHE Pvt. Ltd.

4th Floor, Block II, Prestige Towers, No.99 & 100,
Residency Road, Bengaluru- 560 025, Karnataka, India
TEL: +91-80-49010500 FAX: +91-80-49010555
www.armsel.com

INDONESIA

PT. KITO INDONESIA

Wisma Keiai 5F, Jl. Jend. Sudirman Kav.3-4, Jakarta 10220
TEL: +62-21-572-4261 FAX: +66-3819-5715
kito.com/id/

- The functions and performance of the products mentioned in the catalog have been designed based on the related regulations and standards. If they are used for other than their intended purposes such as being integrated into your equipment, we will not take any responsibility for accidents attributable to their unintended usages as well as guarantee their performance and functions. Never remodel our products.
- When you want to use our products for special purposes, consult us in advance.
- When you want to export our products, consult us in advance. There are different standards and regulations from one destination to another.
- It is prohibited to reprint, copy or divert all the information in this catalog (product patents, trademarks, photos, designs, copies, illustrations, etc.) without our consent.
- The specifications in this catalog are partly subject to change without prior notice.
- Product specifications may vary depending on the country. For more details please contact the nearest KITO dealer.

Distributed by: