



ER2/MR2 Series Electric Chain Hoist (7.5t to 20t)

Parts List

Contents

Contents.....	2
Introduction	2
ER2 Electric Chain Hoist.....	3
Common Parts - Housing & Motor	3
Common Parts - Gearing	4
Common Parts - Chaining.....	5
Common Parts - Bottom Hook	6
Common Parts - Bottom Hook	7
Common Parts - Electric Components.....	8
Power Supply Cable, Push Button (Plug connection).....	9
Power Supply Cable, Push Button (Direct connection).....	10
Chain Container	11
Chain Container	12
Control Station and Cable - Plate Suspension Type.....	13
Top Suspension Plate Parts - Plate Suspension Type.....	15
Top Suspension Plate Parts - Plate Suspension Type.....	16
Control Station and Cable (Hook Type)	17
Top Hook (Hook Type)	19
MR2 Motorized Trolley.....	21
Motor / Gear related.....	21
Frame and Wheel / Suspension shaft related.....	22
Push Button (Plug connection).....	23
Push Button (Direct connection)	24
Control Station and Cable - Plate Suspension Type (7.5t, 10t(L))	25
Control Station and Cable - Plate Suspension Type (10t(s), 15t, 20t)	27
Hanger Plate (Executive for 7.5t).....	29

Introduction

Target products

Product code

The parts lists show the related parts for the ER2 Series Electric Chain Hoist and the MR2 Series Motorized Trolley for large capacity. The types of the target products are as shown below. If you use manual trolley connection and are looking for trolley-related parts, refer to TS Manual Trolley Parts List for large capacity.

ER2			ER2 with MR2 (motorized trolley)		
Capacity (t)	Product code		Capacity (t)	Product code	
	Single speed model			Single speed model	
	Standard speed	Low speed		Standard speed	Low speed
7.5	ER2-075S		7.5	ER2M075S-L	
10	ER2-100S	ER2-100L	10	ER2M100S-L	ER2M100L-L
15	ER2-150S		15	ER2M150S-L	
20	ER2-200S		20	ER2M200S-L	

Product category and voltage

Voltage category	Motor Insulation Class	Voltage range		Control Voltage
		50Hz	60Hz	
230V Class	B	220V	220V	24V (24V to 26.4V)
		230V	230V	
400V Class	F	380V	380V	
		400V	440V	
		415V	-	
500V Class	B	500V	575V	
230/460V Class		208-230V	110V (110V to 120V)	
	415-460V			

Interpretation of parts lists

- Match the number in the 3D diagram with "Figure No." in the parts list to obtain the part name.
- Cells with an x-mark at intersection of Part name and product code in the parts table are not used.
- Blank cells at the intersection of Part name and product code in the parts table vary the part number depending on the power supply voltage.

If you need a part for the blank cell, let us know the product code shown in the preceding item, power supply voltage and part number.

Load chain

- Load chains are hardened chains. Therefore, they cannot be made longer.
- When ordering a load chain, indicate the actual length or lifting height category.
- Parts lists indicate the relation between the lifting height, winding margin, and actual length.

Push button cord complete set

When ordering a push button cord complete set, let us know the cord length referring to the following table.

Capacity	Push button cord length		
	ER2 with hook	ER2 with manual trolley	ER2 with MR2 (motorized trolley)
7.5t	-	Lift + 0.1m (Plug connection)	Lift + 0.7m (Plug connection)
10t(L)	-	Lift + 0.2m (Direct connection)	Lift + 0.9m (Direct connection)
10t(S)	Lift	Lift + 0.2m	Lift + 0.3m
15t	Lift + 0.2m	Lift + 0.6m	Lift + 0.6m
20t	Lift + 0.2m	Lift + 0.6m	Lift + 0.6m

How to order

- When ordering, let us know the product code, voltage, Part name, Part number and quantity.
- For part price and delivery date, contact our distributor or KITO.

Common Parts - Housing & Motor

ER2-075S/ER2-100L/ER2-100S/ER2-150S/ER2-200S

ER2-075S/ER2-100L/ER2-100S/ER2-150S/ER2-200S

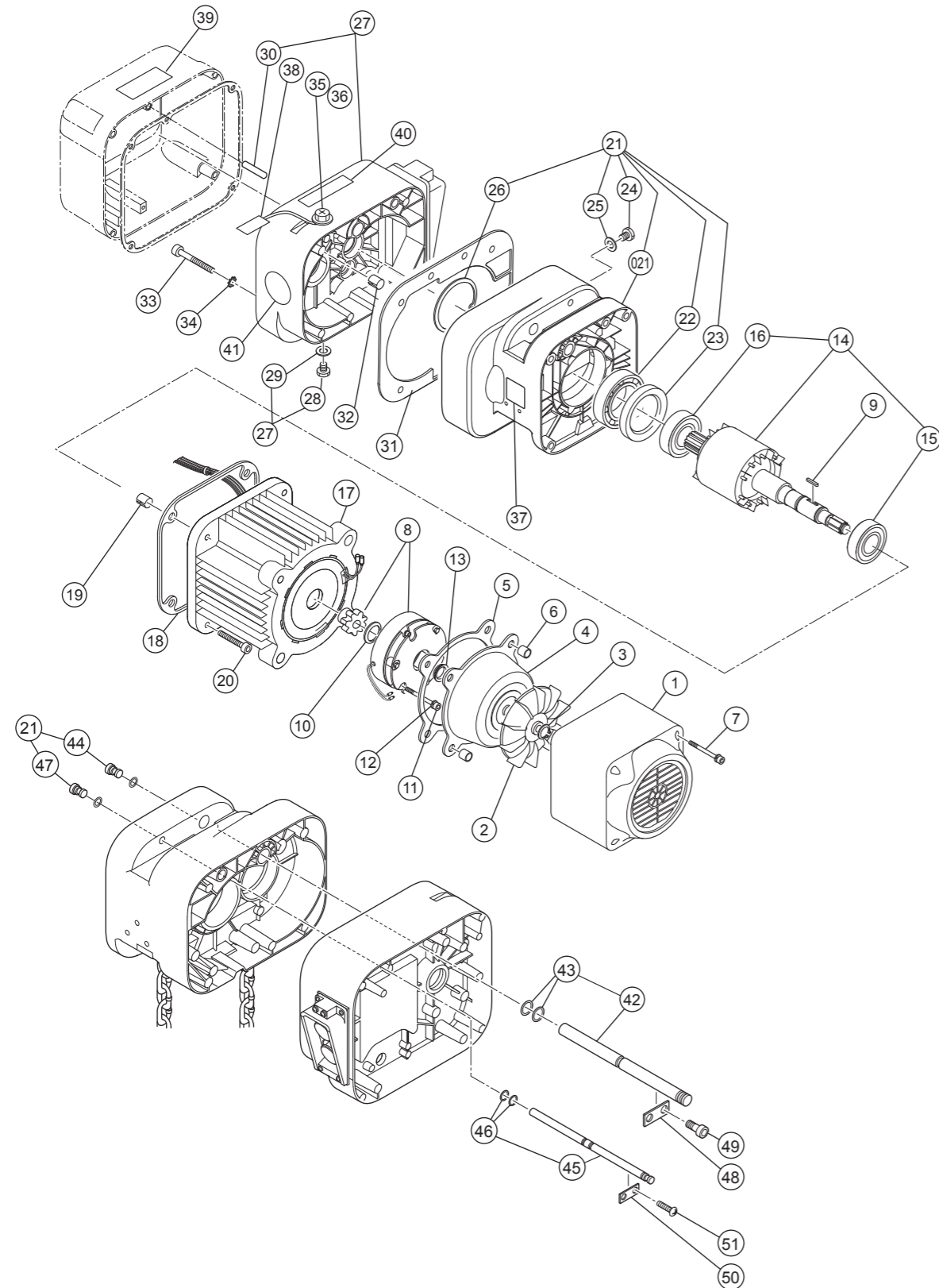
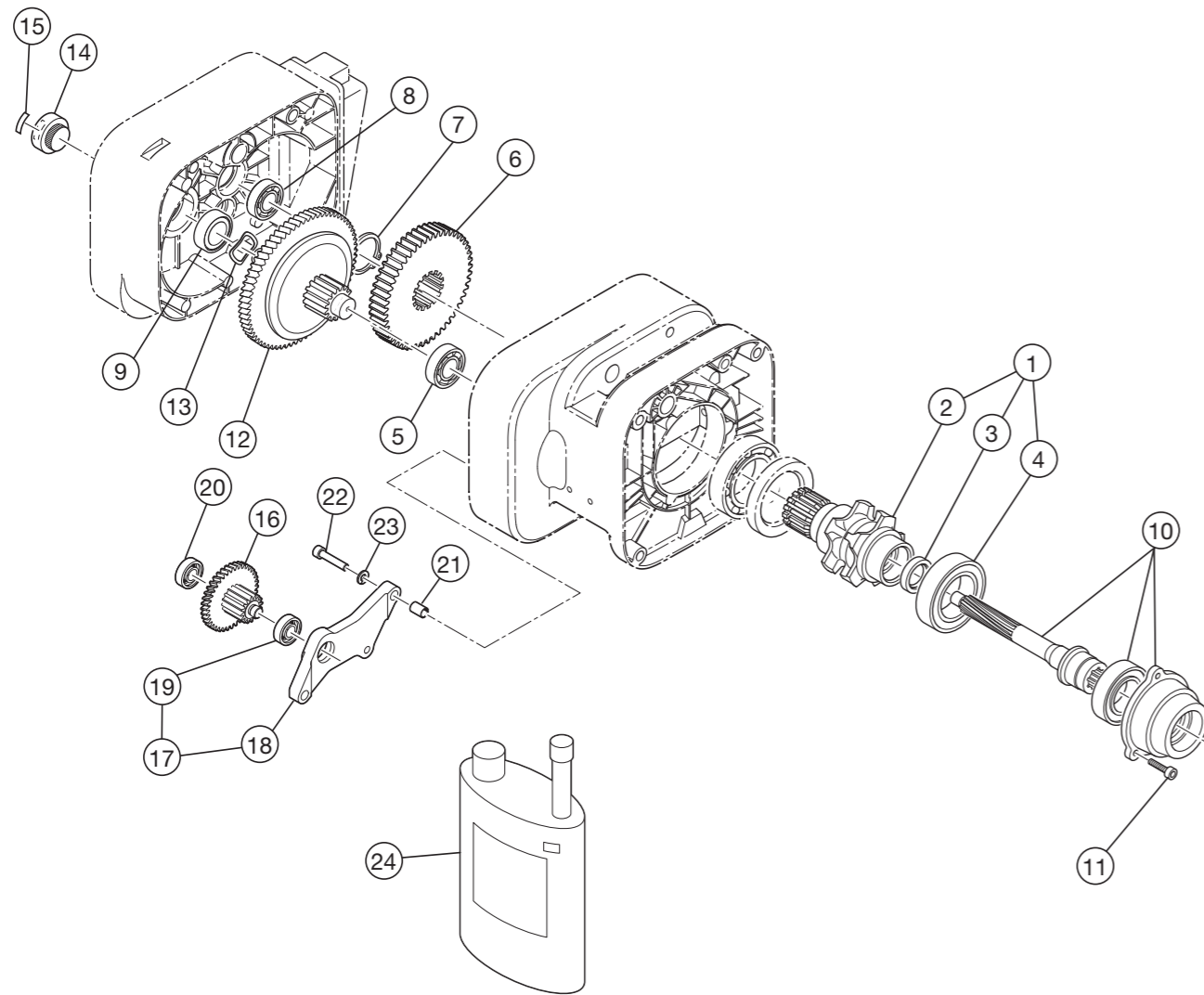


Figure No.	Part Number	Part Name	Quantity per unit		Product code		Remark
			ER2-075S ER2-100L	ER2-100S ER2-150S ER2-200S	ER2-075S ER2-100L	ER2-100S ER2-150S ER2-200S	
1	107	Fan cover	1	2	ER2ES9107	←	
2	108	Fan	1	2	ER2ES9108	←	
3	323	Snap ring	1	2	J1SS000-00022	←	For fan
4	115	Brake cover	1	2	ER2ES9115	←	
5	119	Packing B	1	2	ER2ES9119	←	
6	140	Set pin S	2	4	E6SE005S9120	←	For fan cover, brake cover
7	160	Socket bolt	4	8	J1BE2-0604524	←	For fan cover, brake cover
8	1362	Electromagnetic brake assembly	1	2	MBABB35CA	←	230V Class
			1	2	MBABB35YA	←	400V Class
			1	2	MBABB35KA	←	500V Class
			1	2	MBABB35NA	←	230/460V Class
9	360	Key B	1	2	ER2ES9360	←	For electromagnetic brake
10	361	Snap ring	1	2	J1SS000-00030	←	For electromagnetic brake
11	167	Socket bolt	3	6	J1BE1-0805028	←	For electromagnetic brake
12	168	Spring lock washer	3	6	J1WS011-20080	←	For electromagnetic brake
13	210	V ring	1	2	ER2ES9210	←	Packing between motor shaft and brake cover
14	5502	Motor shaft with rotor	1	2	ER2FS5502	←	
15	202	Ball bearing	1	2	J1GR0C0-06007	←	For motor frame
16	208	Ball bearing	1	2	J1GR0C0-06006	←	For bearing holder (for motor shaft)
17	5501	Motor frame with stator	1	2	ER2BFC25S5A1	←	230V Class
			1	2	ER2BFY25S5A1	←	400V Class
			1	2	ER2BKK25S5A1	←	500V Class
			1	2	ER2BKV25S5A1	←	230/460V Class
18	118	Packing M	1	2	ER2FS9118	←	For motor frame
19	138	Set pin S	2	4	ER2ES9138	←	For motor frame
20	155	Socket bolt	4	8	J1BE2-1204040	←	For motor frame
21	6101	Body B assembly	1	2	ER2FS6101	←	
021	101	Body B	1	2	ER2FS9101	←	
22	243	Ball bearing	1	2	J1GR0A0-06010	←	For load sheave (gear case side)
23	244	Oil seal	1	2	ER2ES9244	←	For load sheave (gear case side)
24	133	Oil plug	1	2	E5FE003S9111	←	
25	136	Plug packing	1	2	E2YS005-9109	←	For oil plug
26	207	Snap ring	1	2	J1SR000-00080	←	
44	6128	Top pin plug assembly	1	2	ER2FS6128	←	
47	6131	Fixing shaft plug assembly	1	2	ER2FS6131	←	
27	6103	Gear case F assembly	1	2	ER2FS6103	←	*
28	133	Oil plug	1	2	E5FE003S9111	←	For gear case
29	136	Plug packing	1	2	E2YS005-9109	←	For oil plug
30	139	Spring pin	1	2	J1PS11-060025	←	
31	116	Packing G	1	2	ER2FS9116	←	For gear case
32	137	Set pin S	2	4	E6SE010S9120	←	For gear case
33	151	Socket bolt	5	10	J1BE1-0809028	←	For gear case
34	152	Toothed lock washer	5	10	J1WH012-10080	←	For gear case
35	135	Oil plug B	1	2	WR2BS9135	←	For gear case F
36	173	Eyebolt packing	1	2	E2YS005-9116	←	For oil plug B
37	960	Name plate load side	1	2	ER1BS9960	←	Load side
38	953	Oil Full tag	1	2	ER1BS9953	←	
	866	Warning sticker EE	1	2	E2DPX10S9866	←	
39	935	Warning sticker E	1	2	ER2CS9936	←	230/460V Class
	810	Name plate OF	1	2	ER1BS9890	←	
40	810	Name plate OF	1	2	ER2CS9845	←	230/460V Class
			1	2	ER1BS9868	←	Speed display
41	868	Name plate AD	1	2	ER1BS9868	←	
42	6121	Top pin assembly	1	2	ER2FS6121	←	For body connection
43	126	O ring	2	4	J1OP011-00180	←	
45	6122	Fixing shaft assembly	1	2	ER2FS6122	←	
46	127	O ring	2	4	J1OP011-00090	←	
48	123	Plate A	1	2	ER1ES9123	←	For top pin
49	124	Socket bolt with spring lock washer	2	4	J1BG1-0601616	←	For plate A (top pin)
50	125	Plate A	1	2	ER1BS9123	←	For fixing shaft
51	143	Machine screw with spring washer	2	4	J1AP2-5001212	←	For plate A (fixing shaft)

* There are other built-in parts. See the following pages. (P4, P8)

Common Parts - Gearing

ER2-075S/ER2-100L/ER2-100S/ER2-150S/ER2-200S



Common Parts - Gearing

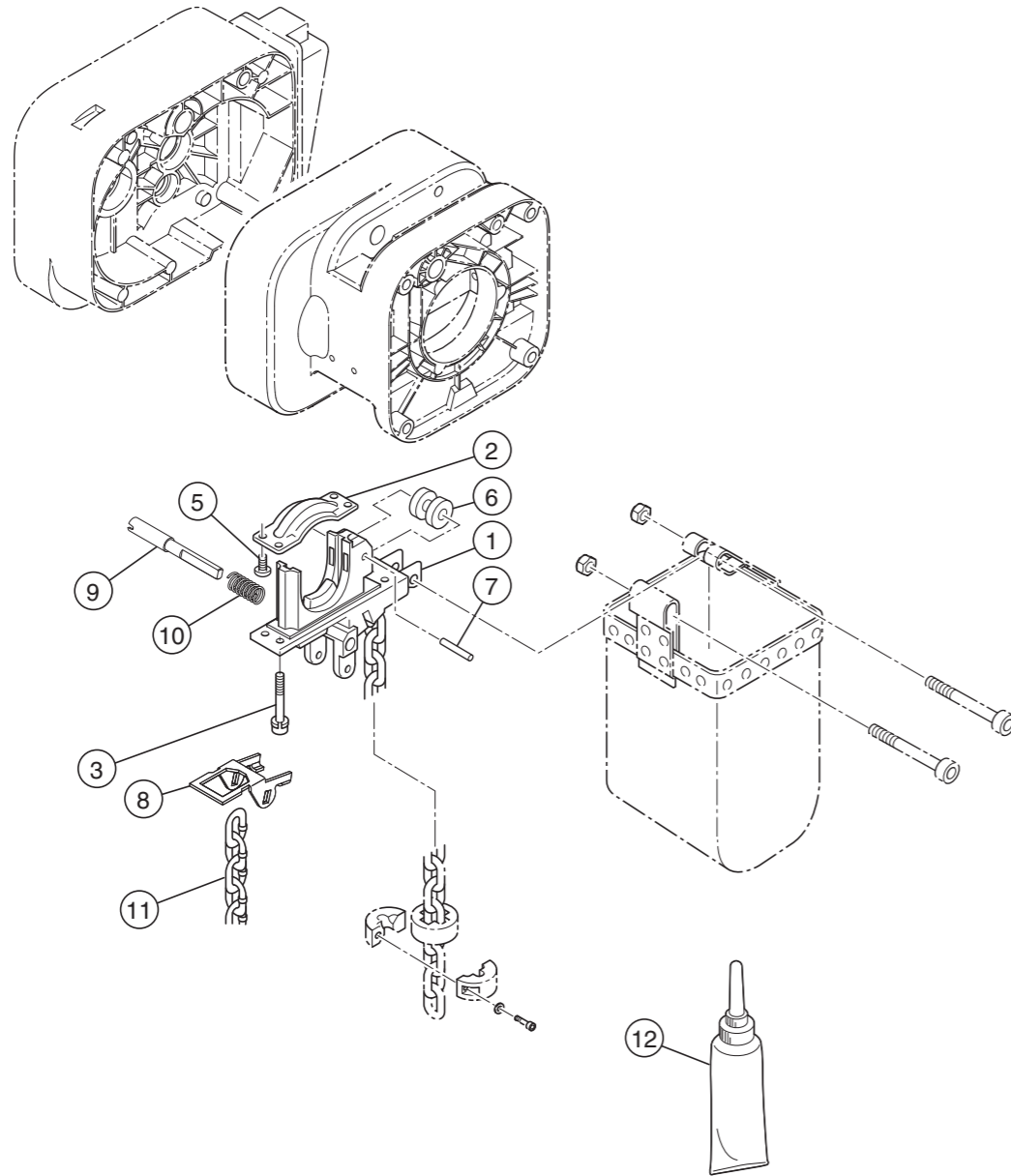
ER2-075S/ER2-100L/ER2-100S/ER2-150S/ER2-200S

Figure No.	Part Number	Part Name	Quantity per unit		Product code					Remark
			ER2-075S ER2-100L	ER2-100S ER2-150S ER2-200S	ER2-075S	ER2-100L	ER2-100S	ER2-150S	ER2-200S	
1	6241	Load sheave assembly	1	2	ER2FS6241	←	←	←	←	
2	241	Load sheave	1	2	ER2FS9241	←	←	←	←	
3	221	Oil seal	1	2	ER2ES9221	←	←	←	←	For pinion
4	242	Ball bearing	1	2	J1GR020-06210	←	←	←	←	For load sheave (motor side)
5	238	Ball bearing	1	2	J1GR030-06405	←	←	←	←	For gear #3 (body side)
6	240	Load gear	1	2	ER2FS9240	←	←	←	←	
7	245	Snap ring	1	2	J1SS000-00050	←	←	←	←	For load gear
8	222	Ball bearing	1	2	J1GROA0-06303	←	←	←	←	For pinion (gear case side) *
9	233	Oil seal	1	2	ER1DS9233	←	←	←	←	For seal collar *
10	5220	Pinion assembly	1	2	ER2FS5220	←	←	←	←	
11	164	Socket bolt	3	6	J1BE2-0601616	←	←	←	←	For bearing holder
12	1223	Friction clutch complete set	1	2	ER2FS1223	←	←	←	←	
13	234	Wave washer	1	2	ER2ES9234	←	←	←	←	
14	235	Nut cover	1	2	ER2ES9235	←	←	←	←	
15	840	Name plate FP	1	2	ER1BS9892	←	←	←	←	
16	5262	Gear B assembly	1	2	ER2FS5262	←	←	←	←	
17	6261	Gear holder plate assembly	1	2	ER2FS6261	←	←	←	←	
18	261	Gear holder plate	1	2	ER2FS9261	←	←	←	←	
19	264	Ball bearing	1	2	J1GR000-06203	←	←	←	←	
20	266	Ball bearing	1	2	J1GROA0-06202	←	←	←	←	For gear B (gear case side)
21	270	Set pin S	2	4	E6SE010S9120	←	←	←	←	For gear holder plate
22	271	Socket bolt	3	6	J1BE1-0803535	←	←	←	←	For gear holder plate
23	272	Spring lock washer	3	6	J1WS011-20080	←	←	←	←	For gear holder plate
24	1855	Oil pot F (1L)	2	4	ER1CS1855	←	←	←	←	For friction clutch specification

* Included in Gear case F assembly. (P3)

Common Parts - Chaining

ER2-075S/ER2-100L/ER2-100S/ER2-150S/ER2-200S



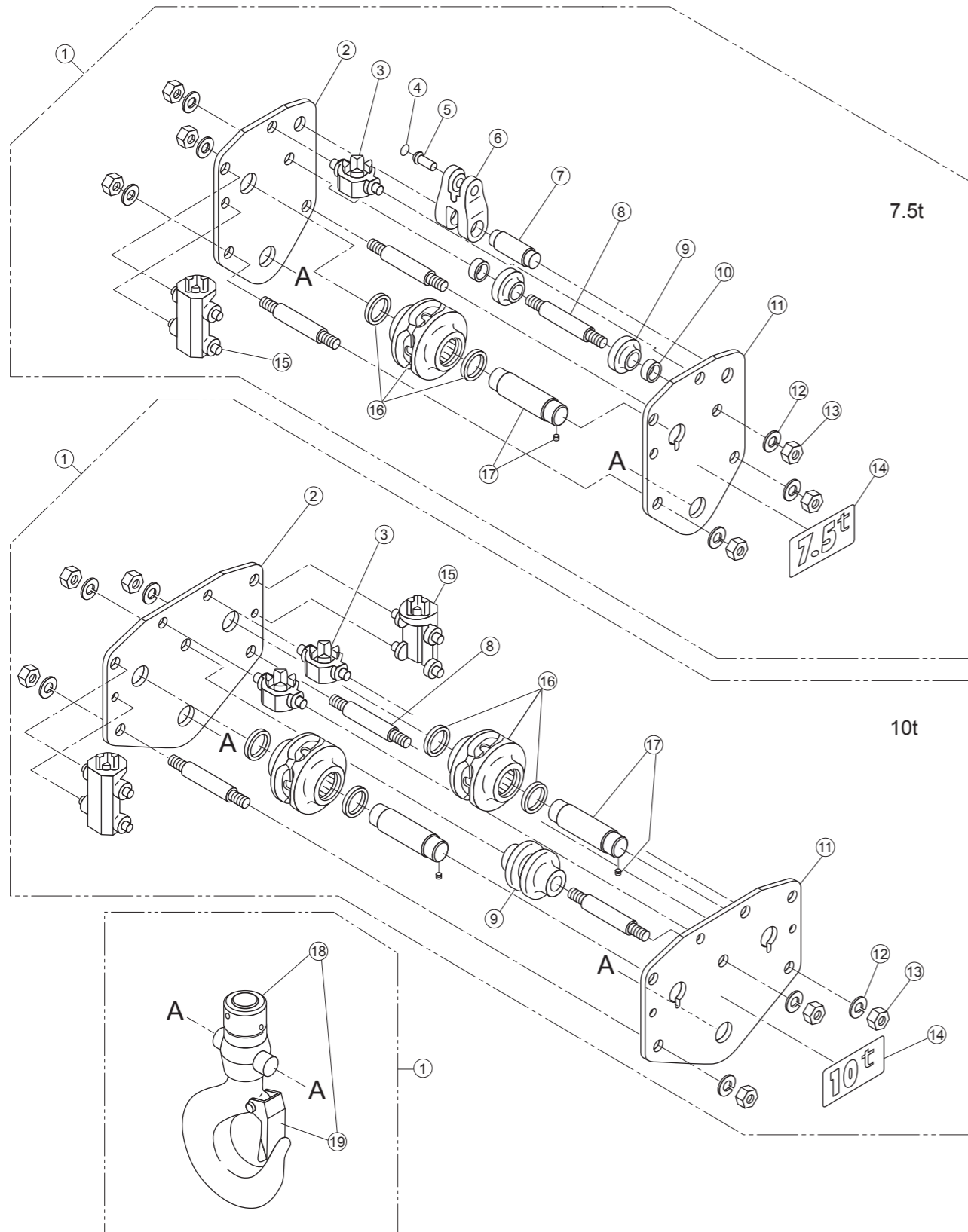
Common Parts - Chaining

ER2-075S/ER2-100L/ER2-100S/ER2-150S/ER2-200S

Figure No.	Part Number	Part Name	Quantity per unit		Product code		Remark
			ER2-075S ER2-100L	ER2-100S ER2-150S ER2-200S	ER2-075S ER2-100L	ER2-100S ER2-150S ER2-200S	
1	331	Chain guide A	1	2	ER2FS9331	←	
2	332	Chain guide B	1	2	ER2FS9332	←	
3	346	Socket bolt with spring lock washer	4	8	J1BG2-0803030	←	For chain guide A
5	348	Machine screw with spring washer	4	8	J1AP2-6001212	←	For chain guide B
6	333	Guide roller	1	2	ER1EM9333	←	
7	334	Roller pin	1	2	ER1DL9334	←	
8	337	Limit lever	1	2	ER2FS9337	←	
9	338	Limit lever pin	1	2	ER2FS9338	←	
10	357	Limit lever spring	1	2	ER2CS9357	←	
11	954	Load chain	1	1	KBAN112W0000	←	Nickel plating specification
12	1951	Lubricant tube assembly	2	2	ER2CS1951	←	

Common Parts - Bottom Hook

ER2-075S/ER2-100L/ER2-100S



Common Parts - Bottom Hook

ER2-075S/ER2-100L/ER2-100S

Figure No.	Part Number	Part Name	Quantity per unit		Product code		Remark
			ER2-075S	ER2-100L ER2-100S	ER2-075S	ER2-100L ER2-100S	
1	1121	Bottom hook complete set	1	1	ER2HS1121	ER2IS1121	
2	035	Bottom suspension plate B	1	1	ER2HS9035	ER2IS9035	
3	067	Bottom cross guide	1	2	E6SE075S9067	←	
4	092	Snap ring	1	X	J1SR000-00021	X	
5	041	Chain pin	1	X	S2SB030-9107	X	
6	039	Chain holder	1	X	E6SE075S9039	X	
7	040	Chain holder pin	1	X	E6SE075S9040	X	
8	038	Bottom stay bolt	3	3	E7SE075S9038	←	
9	062	Guide roller	2	X	E6SE075S9062	X	
	063	Bottom guide roller	X	1	X	E6SE100S9063	
10	065	Bottom collar	2	X	E6SE075S9065	X	
11	034	Bottom suspension plate A	1	1	ER2HS9034	ER2IS9034	
12	082	Spring lock washer	6	6	J1WS011-20200	←	For bottom stay bolt
13	081	Nut	6	6	J1NA001-30200	←	For bottom stay bolt
14	069	Name plate A	1	1	ER1HS9069	ER1IS9069	
15	066	Bottom chain guide	1	2	E6SE075S9066	←	
16	5052	Bottom idle sheave assembly	1	2	ER2HS5052	←	
17	5054	Bottom shaft assembly	1	2	E6SE075S5054	←	
18	2121	Bottom hook assembly	1	1	ER2HS2121	ER2IS2121	
19	1071	Hook latch assembly	1	1	C2BA100-1071	C2BA150-1071	

Common Parts – Bottom Hook

ER2-150S/ER2-200S

ER2-150S/ER2-200S

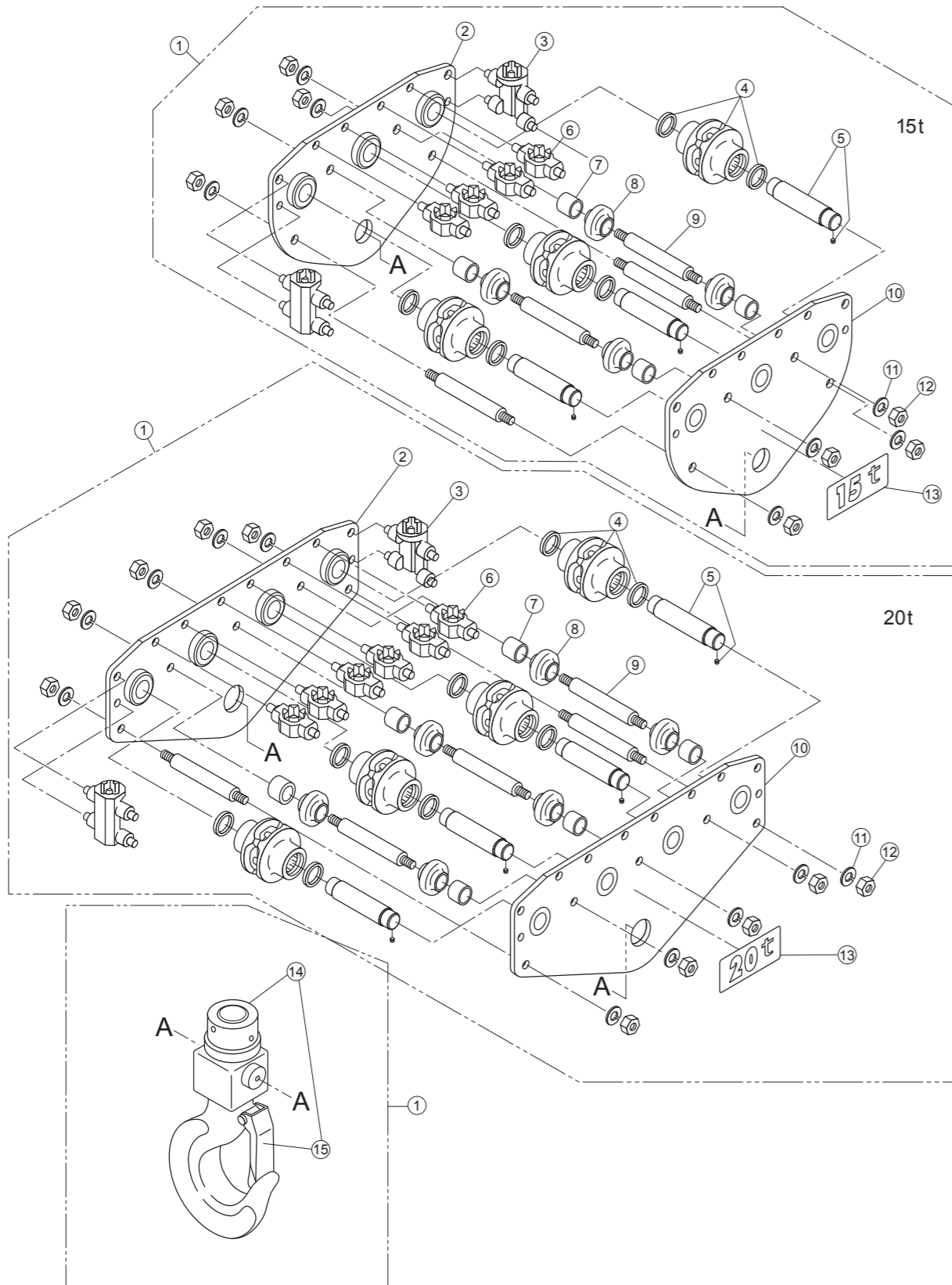
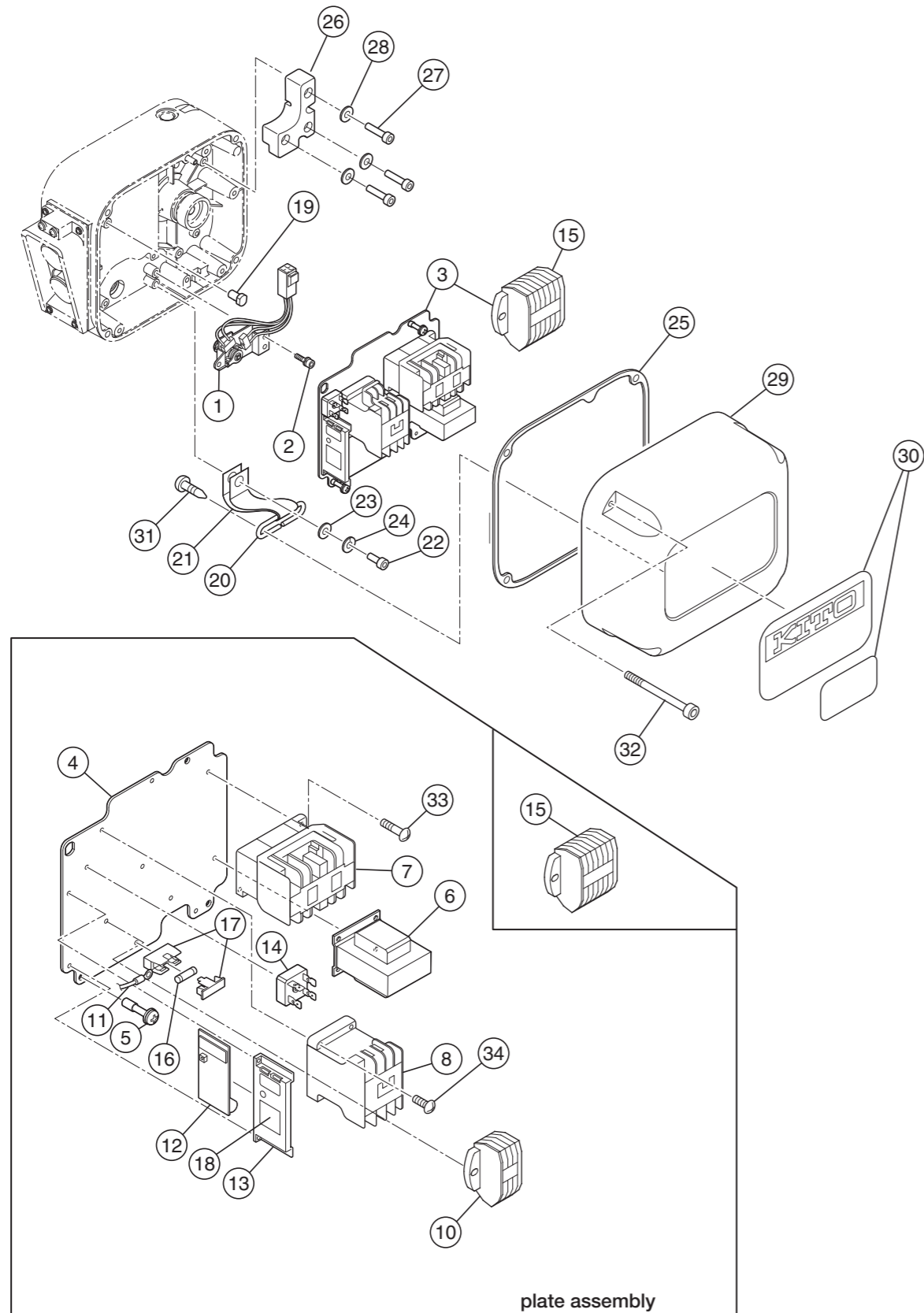


Figure No.	Part Number	Part Name	Quantity per unit		Product code		Remark
			ER2-150S	ER2-200S	ER2-150S	ER2-200S	
1	1121	Bottom hook complete set	1	1	ER2JS1121	ER2KS1121	
2	5035	Bottom suspension plate B assembly	1	1	ER2JS5035	ER2KS5035	
3	066	Bottom chain guide	2	2	E6SE150S9066	←	
4	5052	Bottom idle sheave assembly	3	4	ER2HS5052	←	
5	5054	Bottom shaft assembly	3	4	E6SE075S5054	←	
6	067	Bottom cross guide	4	6	E6SE150S9067	←	
7	065	Bottom collar	4	6	E6SE150S9065	←	
8	062	Guide roller	4	6	E6SE075S9062	←	
9	038	Bottom stay bolt	4	7	E7SE150S9038	←	
10	5034	Bottom suspension plate A assembly	1	1	ER2JS5034	ER2KS5034	
11	082	Spring lock washer	8	14	J1WS011-20200	←	For bottom stay bolt
12	081	Nut	8	14	J1NA001-30200	←	For bottom stay bolt
13	069	Name plate A	1	1	ER1JS9069	ER1KS9069	
14	2121	Bottom hook assembly	1	1	ER2JS2121	ER2KS2121	
15	1071	Hook latch assembly	1	1	C2BA200-1071	C2BA300-1071	

Common Parts - Electric Components

ER2-075S/ER2-100L/ER2-100S/ER2-150S/ER2-200S



Common Parts - Electric Components

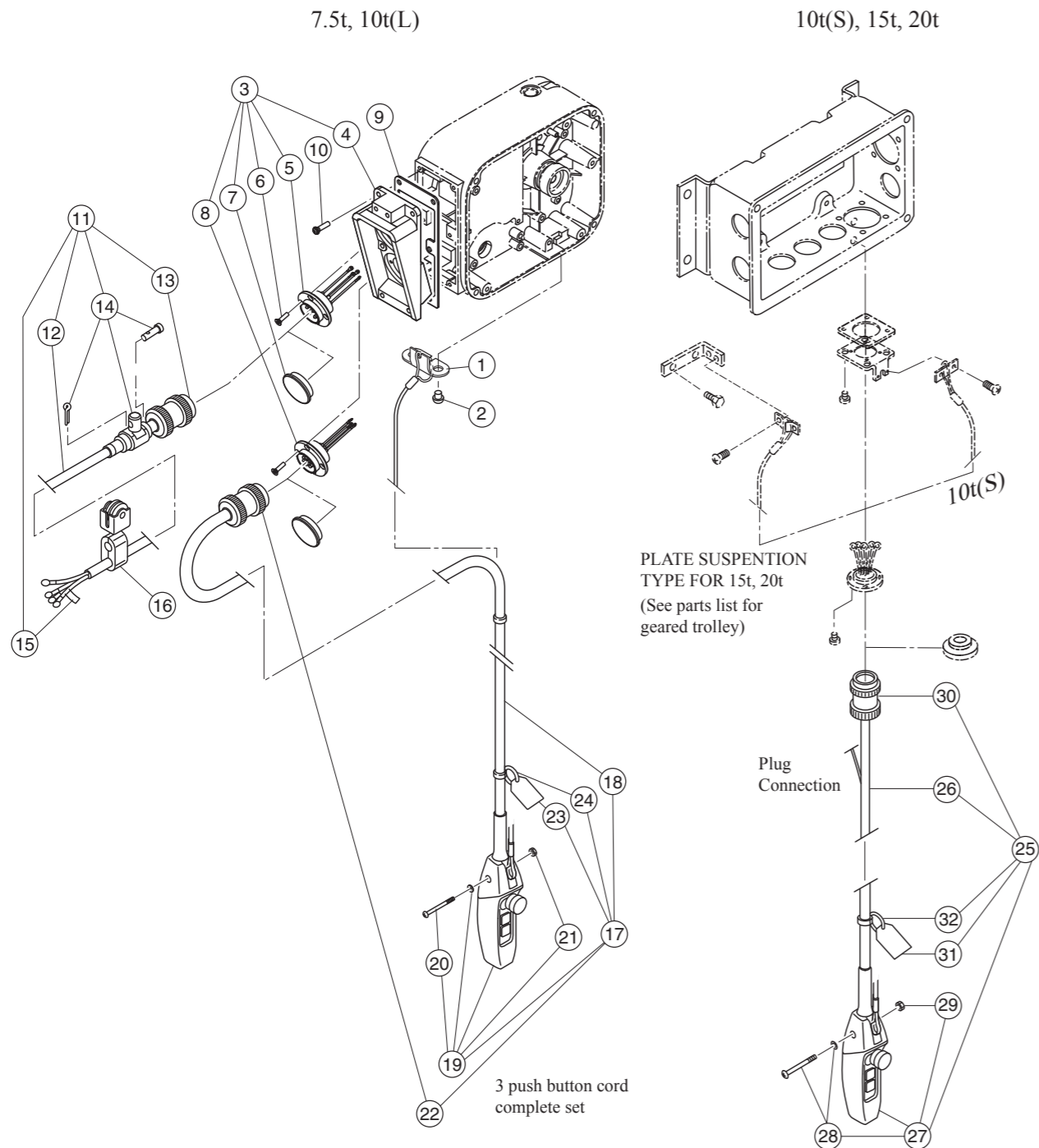
ER2-075S/ER2-100L/ER2-100S/ER2-150S/ER2-200S

Figure No.	Part Number	Part Name	Quantity per unit		Product code				Remark
			ER2-075S ER2-100L	ER2-100S ER2-150S ER2-200S	ER2-075S	ER2-100L ER2-100S	ER2-150S	ER2-200S	
1	1060	Limit switch complete set	1	2	ER2C11060	←	←	←	
2	124	Socket bolt with spring lock washer	3	6	J1BG1-0601212	←	←	←	For limit switch
3	1441	Plate assembly	1	2	ER2BFC20S5A2	←	←	←	230V Class
					ER2BFY20S5A2	←	←	←	400V Class
					ER2BFA20S5A2	←	←	←	500V Class
					ER2GHM20S5A2	←	←	←	230/460V Class
4	441	Plate	1	2	ER2ES9441	←	←	←	
5	445	Plate screw	3	6	ER1BS9445	←	←	←	
6	577	Transformer	1	2	TRF13C211	←	←	←	230V Class
					TRF13Y211	←	←	←	400V Class
					TRF13A211	←	←	←	500V Class
					TRF73V611	←	←	←	230/460V Class
7	578	Electromagnetic contactor	1	2	MGC23402B	←	←	←	For forward/reverse switching 230V, 400V, 500V Class
					MGC23406B	←	←	←	230/460V Class
8	580	Electromagnetic contactor	1	2	MGC14302C	←	←	←	For emergency stop 230V, 400V, 500V Class
					MGC14306C	←	←	←	230/460V Class
10	581	Terminal plate 3P	1	2	ECP1303AB	←	←	←	230/460V Class
11	583	Lead wire	1	2	ER2BEE20S9A2	←	←	←	
					ER2GHM20S9A2	←	←	←	230/460V Class
12	1582	CH meter	1	2	ECP91CHAC	←	←	←	
13	597	CH meter support	1	2	ECP99BKBA	←	←	←	
14	598	Rectifier	1	2	ECP94DIAA	←	←	←	
15	601	Terminal plate 6P	1	2	ECP1306AF	←	←	←	230/460V Class
16	602	Fuse	1	2	ECP91FZ02	←	←	←	
17	603	Fuse holder	1	2	ECP92FZAA	←	←	←	
18	838	Name plate CH	1	2	ECP99CHAA	←	←	←	
33	612	Machine screw with spring washer	2	4	J1AW2-4001414	←	←	←	For forward/reverse switching
34	615	Machine screw with spring washer	2	4	J1AW2-4001616	←	←	←	For emergency stop
19	449	Fulcrum pin	1	2	ER2CS9449	←	←	←	Plate rotation center *
20	456	Cover suspender	1	2	ER2CS9456	←	←	←	*
21	457	Cover belt	1	2	ER2CS9457	←	←	←	*
22	458	Socket bolt	1	2	J1BE1-0601616	←	←	←	For cover belt (attached to gear case) *
23	459	Plain washer	1	2	ER1BS9436	←	←	←	For cover belt (attached to gear case) *
24	460	Spring lock washer	1	2	J1WS011-10060	←	←	←	For cover belt (attached to gear case) *
25	117	Packing C	1	2	ER2FS9117	←	←	←	For controller cover
26	109	Balancer	1	2	ER2FS9098	←	←	←	
27	162	Socket bolt	3	6	J1BE1-0802525	←	←	←	For balancer
28	163	Spring lock washer	3	6	J1WS011-20080	←	←	←	For balancer
29	104	Controller cover	1	2	ER2FS9104	←	←	←	
					801	←	←	←	
30	802	Name plate D	1	2	ER2BJC75S9A6	←	←	←	
					ER2BJC1QS9A6	ER2BJC1PS9A6	ER2BJC2QS9A6		
31	114	Pan head machine screw	2	4	J1AK2-5001212	←	←	←	For cover suspender (attached to controller cover)
32	153	Socket bolt with spring lock washer	4	8	J1BG2-0604024	←	←	←	For controller cover

* Included in Gear case F assembly. (P3)

Power Supply Cable, Push Button (Plug connection)

ER2-075S/ER2-100L/ER2-100S/ER2-150S/ER2-200S



Power Supply Cable, Push Button (Plug connection)

ER2-075S/ER2-100L/ER2-100S/ER2-150S/ER2-200S

7.5t, 10t(L)

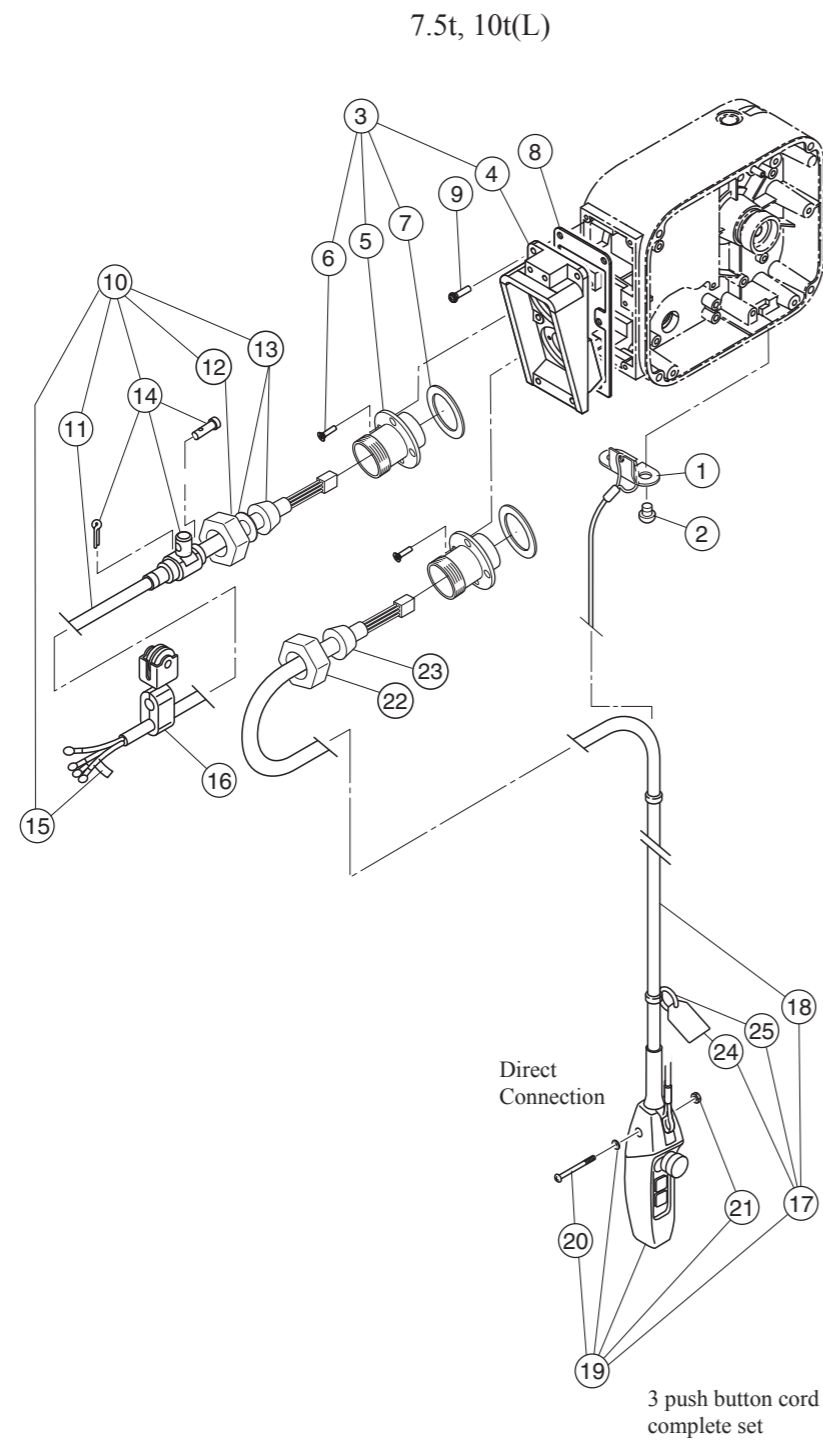
Figure No.	Part Number	Part Name	Quantity per unit	Product code		Remark
				ER2-075S	ER2-100L	
1	535	Cord support L (Wire stopper)	1	ER1BS9534	←	
2	536	Machine screw with spring washer	2	J1AP2-5001212	←	
3	1511	Socket frame complete set	1	ER2ES3511 ER2ES4511	←	230V, 400V, 500V Class 230/460V Class
4	511	Socket frame	1	ER2CS9511	←	
5	1523	Socket 4P assembly	1	ER2ES1523 ER2ES2523	←	230V, 400V, 500V Class 230/460V Class
6	537	Tapping flat head machine screw	8	E6SE003S9551	←	
7	538	Socket cover 4P	2	E0YS005-9973	←	For socket 4P, 8P; Attached upon assembly packaging
8	1564	Socket 8P assembly	1	ER2CS2564	←	
9	512	Socket frame packing	1	ER2CS9512	←	
10	516	Machine screw with spring washer	6	J1AP2-5002020	←	
11	1771	Power supply cable assembly	1	ZBZA12AJ2000 ZBZA12AH2000	←	230V, 400V, 500V Class 230/460V Class
12	771	Cable	1	Z2CU402-0000 ZDCC402-0000	←	230V, 400V, 500V Class 230/460V Class
13	522	Plug 4P	1	ECP2304AE ECP2304AF	←	230V, 400V, 500V Class 230/460V Class
14	1724	Cable support 14 assembly Cable support 16 assembly	1	E4YS005-2822 M3ES010-1724	←	230V, 400V, 500V Class 230/460V Class
15	741	Name plate G	1	E6LE010S9806	←	
16	1641	Cable hanger 14 assembly	1	X	X	
17	1557	Push button cord EH complete set	1	ZB10025W1000 ZB10025I5000	←	230V, 400V, 500V Class 230/460V Class
18	557	Cable	1	Z3CR401-0000 Z3CH401-0000	←	230V, 400V, 500V Class 230/460V Class
19	1561	3 push button switch assembly	1	SWDB100AA SWDH100AA	←	230V, 400V, 500V Class 230/460V Class
20	626	Machine screw with spring washer	1	J1AP2-4002608	←	
21	627	Nut	1	J1AN004-10040	←	
22	566	Plug 8P	1	ECP2108AA	←	
23	567	Warning tag PB	1	SWD9013AB SWD9013AD	←	230V, 400V, 500V Class 230/460V Class
24	568	Tag holder	1	E7SE003S9787	←	

10t(S), 15t, 20t

Figure No.	Part Number	Part Name	Quantity per unit	Product code		Remark
				ER2-100S, 150S, 200S ER2SG100S	ER2SG150S ER2SG200S	
25	1557	Push button cord EH complete set	1	ZB1002FW1000 ZB1002FI5000	ZB1002GW1000 ZB1002GI5000	230V, 400V, 500V Class 230/460V Class
26	557	Cable	1	Z3CR401-0000 Z3CH401-0000	←	230V, 400V, 500V Class 230/460V Class
27	1561	3 push button switch assembly	1	SWDB100AA SWDH100AA	←	230V, 400V, 500V Class 230/460V Class
28	626	Machine screw with spring washer	1	J1AP2-4002608	←	
29	627	Nut	1	J1AN004-10040	←	
30	566	Plug 8P	1	ECP2108AA	←	
31	567	Warning tag PB	1	SWD9013AB SWD9013AD	←	230V, 400V, 500V Class 230/460V Class
32	568	Tag holder	1	E7SE003S9787	←	

Power Supply Cable, Push Button (Direct connection)

ER2-075S/ER2-100L



Power Supply Cable, Push Button (Direct connection)

ER2-075S/ER2-100L

7.5t, 10t(L)

Figure No.	Part Number	Part Name	Quantity per unit	Product code		Remark
				ER2-075S	ER2-100L	
1	535	Cord support L (wire stopper)	1	ER1BS9534	←	
2	536	Machine screw with spring washer	2	J1AP2-5001212	←	
3	2511	Socket frame complete set	1	ER2CS2511	←	
4	511	Socket frame	1	ER2CS9511	←	
5	575	Holder C	2	ECP5924AL	←	
6	517	Tapping machine screw	8	ER1BS9517	←	For holder C
7	568	Holder packing	2	ECP5924AM	←	
8	512	Socket frame packing	1	ER2CS9512	←	
9	516	Machine screw with spring washer	6	J1AP2-5002020	←	
10	1771	Power supply cable assembly	1	ZBZB12AJ2000	←	230V, 400V Class
11	771	Cable	1	Z2CU402-0000	←	
12	341	Holder A	1	ECP5924AA	←	
13	351	Cable packing	1	ECP6914AA	←	
14	1724	Cable support 14 assembly	1	E4YS005-2822	←	
15	741	Name plate G	1	E6LE010S9806	←	
16	1641	Cable hanger 14 assembly	1	X	X	
17	1557	Push button cord EH complete set	1	ZBS0025W1000	←	230V, 400V Class
18	557	Cable	1	Z3CR401-0000	←	
19	1561	3 push button switch assembly	1	SWDB100AA	←	
20	626	Machine screw with spring washer	1	J1AP2-4002608	←	
21	570	Nut	1	J1NS004-10040	←	
22	341	Holder A	1	ECP5924AA	←	
23	351	Cable packing	1	ECP6912AA	←	
24	567	Warning tag PB	1	SWD9013AB	←	
25	568	Tag holder	1	E7SE003S9787	←	

ER2-075S/ER2-100L

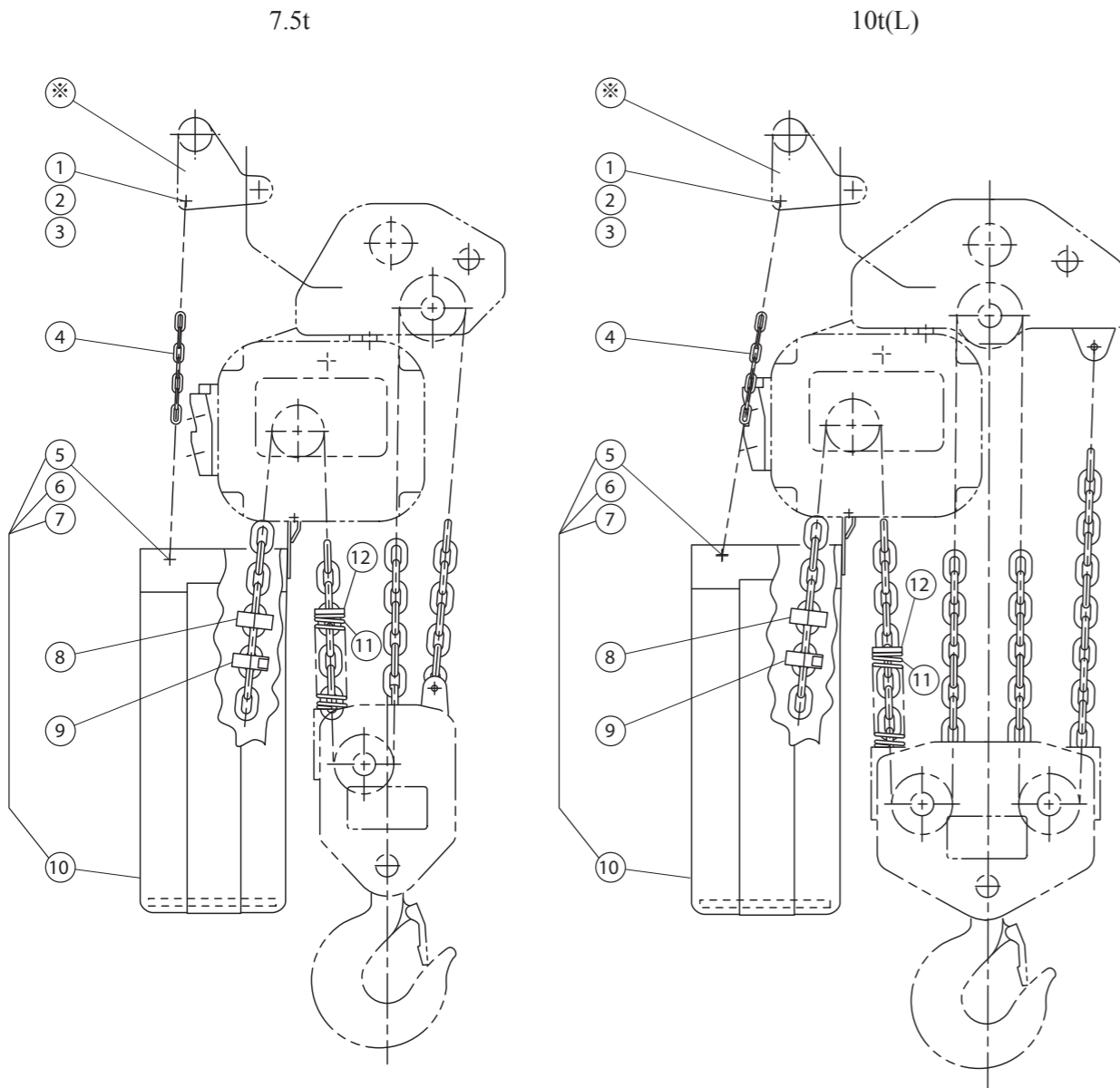
ER2-075S/ER2-100L

Plate suspension type

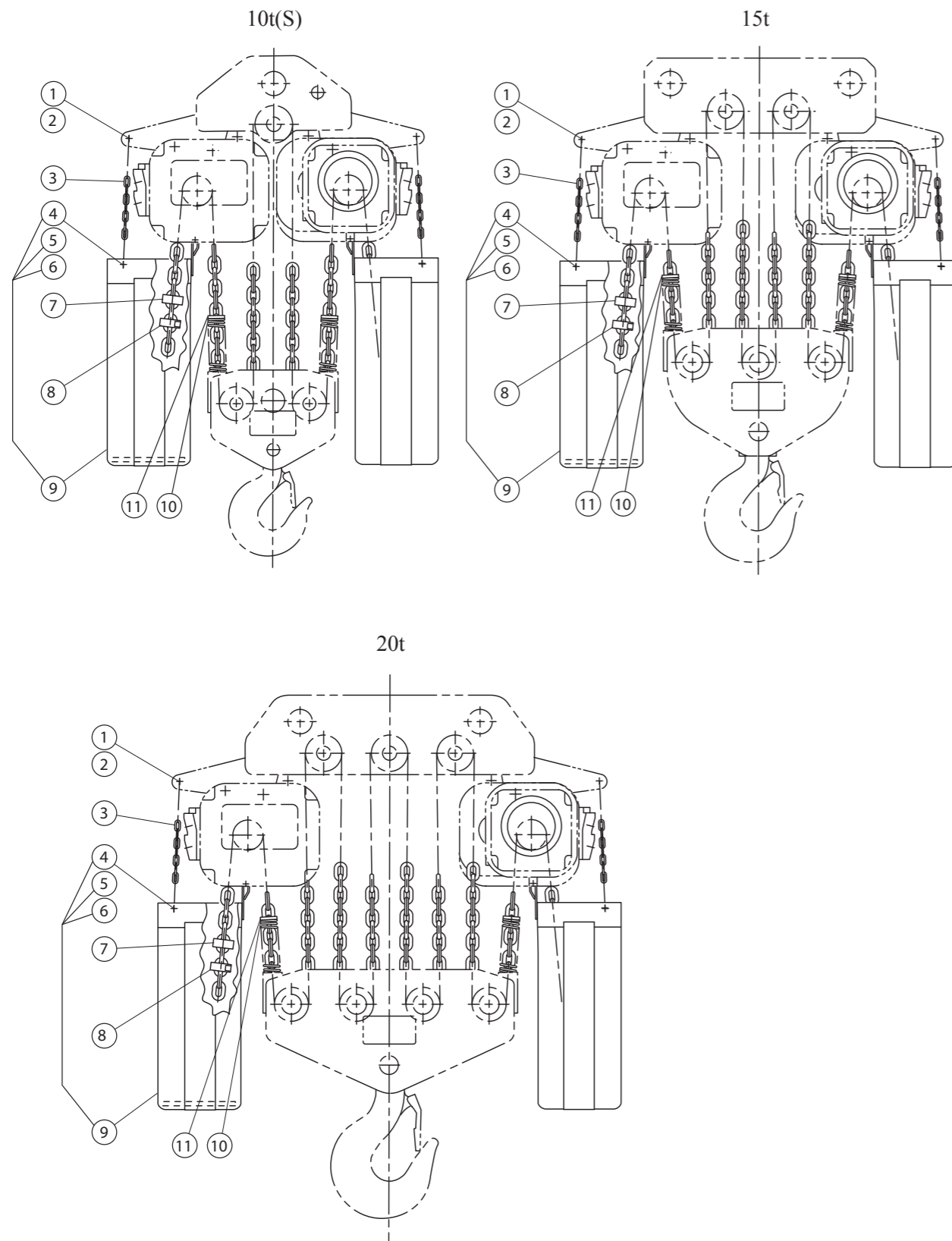
Figure No.	Part Number	Part Name	Quantity per unit	Product code		Remark
				ER2-075S	ER2-100L	
1	981	Socket bolt	2	J1BE1-0803030	←	For container chain
2	983	Lever nut	2	C2BA100-9074	←	For container chain
3	984	Washer	2	J1WB012-10080	←	For container chain
4	975	Container chain	2	E6SE075S9875	←	
10	5930	Chain container (H1) assembly	1	ER2HS5930	←	
	5931	Chain container (H2) assembly		ER2HS5931	←	
5	971	Socket bolt	2	J1BE1-0802020	←	
6	973	Lever nut	2	C2BA100-9074	←	
7	974	Washer	2	J1WB012-10080	←	
8	049	Cushion rubber	1	ER1EM9053	←	Non-load side
9	045	Stopper assembly	1	ER1ES1041	←	
11	047	Chain spring	1	E6SE025B9047	←	Load side
12	048	Limiting plate	1	ER1FH9054	←	Load side

Hook type

Figure No.	Part Number	Part Name	Quantity per unit	Product code		Remark
				ER2-075S	ER2-100L	
1	981	Socket bolt	1	X	J1BE1-0806528	For container chain
2	983	Lever nut	1	X	C2BA100-9074	For container chain
4	975	Container chain	2	X	E6SE100S9875	
10	5930	Chain container (H1) assembly	1	X	ER2HS5930	
	5931	Chain container (H2) assembly		X	ER2HS5931	
5	971	Socket bolt	2	X	J1BE1-0802020	
6	973	Lever nut	2	X	C2BA100-9074	
7	974	Washer	2	X	J1WB012-10080	
8	049	Cushion rubber	1	X	ER1EM9053	Non-load side
9	045	Stopper assembly	1	X	ER1ES1041	
11	047	Chain spring	1	X	E6SE025B9047	Load side
12	048	Limiting plate	1	X	ER1FH9054	Load side



ER2-100S/ER2-150S/ER2-200S



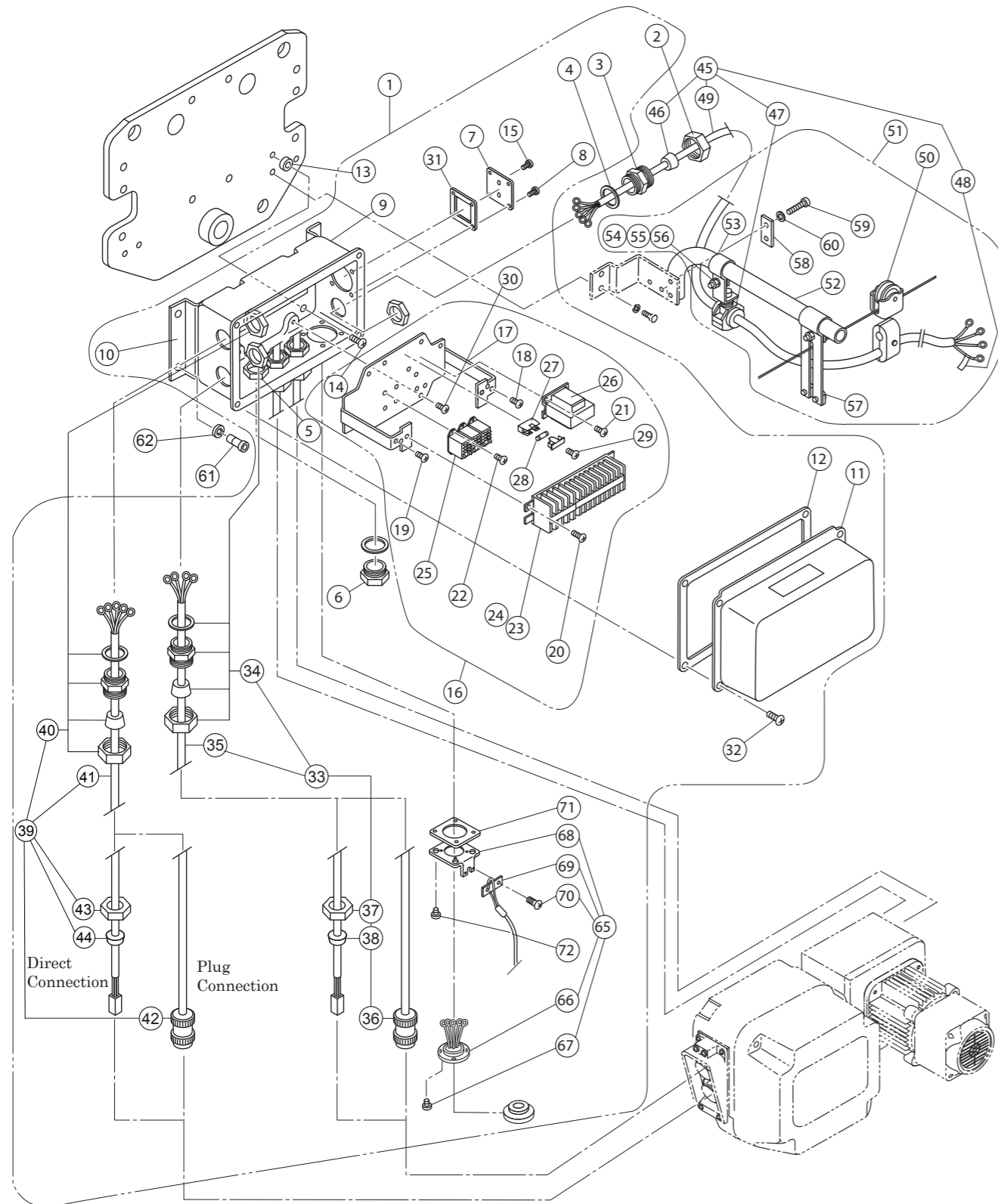
ER2-100S/ER2-150S/ER2-200S

Plate suspension and hook type

Figure No.	Part Number	Part Name	Quantity per unit	Product code			Remark
				ER2-100S	ER2-150S	ER2-200S	
1	981	Socket bolt	2	J1BE1-0806528	←	←	For container chain
2	983	Lever nut	2	C2BA100-9074	←	←	For container chain
3	975	Container chain	4	E6SE100S9875	←	←	
9	5930	Chain container (H1) assembly	2	ER2HS5930	←	←	
	5931	Chain container (H2) assembly		ER2HS5931	←	←	
4	971	Socket bolt	4	J1BE1-0802020	←	←	
5	973	Lever nut	4	C2BA100-9074	←	←	
6	974	Washer	4	J1WB012-10080	←	←	
7	049	Cushion rubber	2	ER1EM9053	←	←	Non-load side
8	045	Stopper assembly	2	ER1ES1041	←	←	
10	047	Chain spring	2	E6SE025B9047	←	←	Load side
11	048	Limiting plate	2	ER1FH9054	←	←	Load side

Control Station and Cable - Plate Suspension Type

ER2-100S/ER2-150S/ER2-200S



Control Station and Cable - Plate Suspension Type

ER2-100S/ER2-150S/ER2-200S

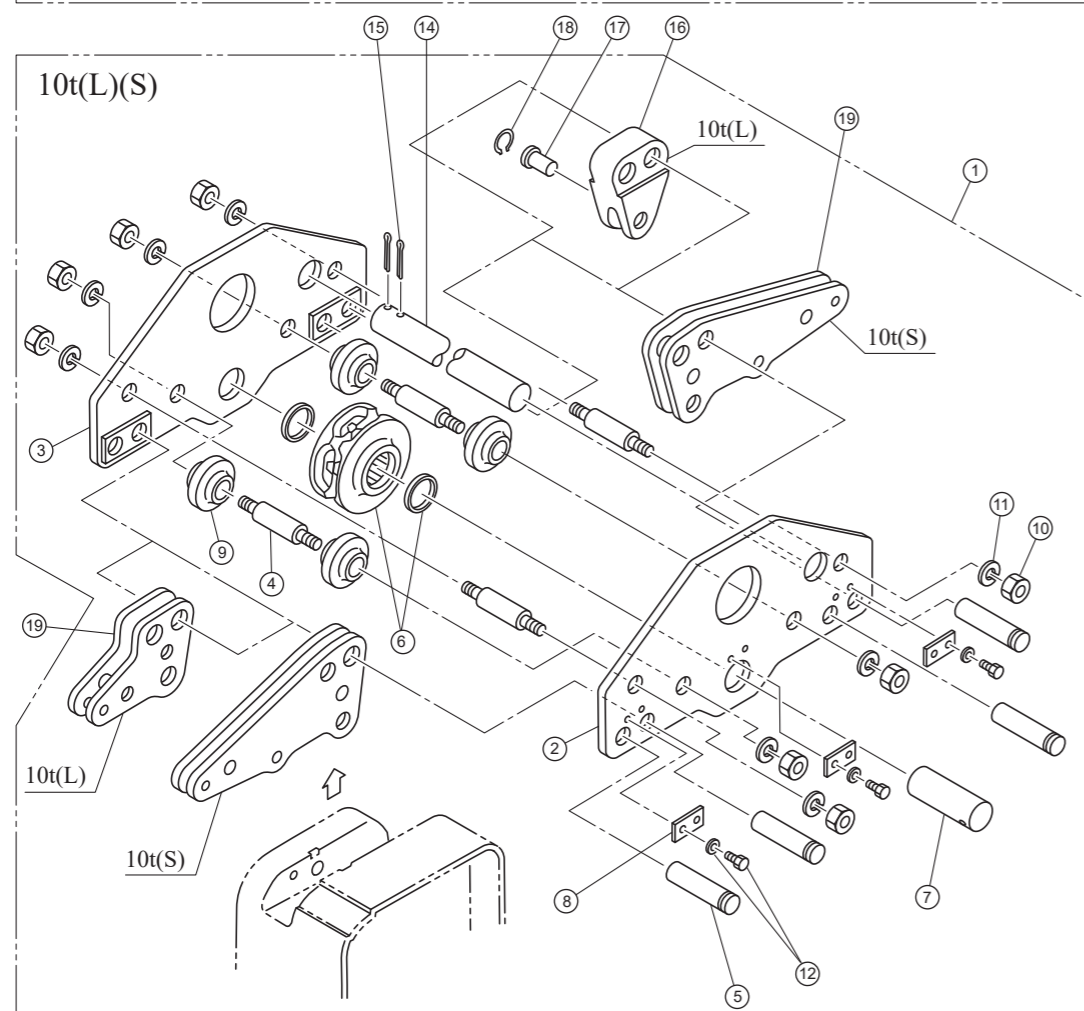
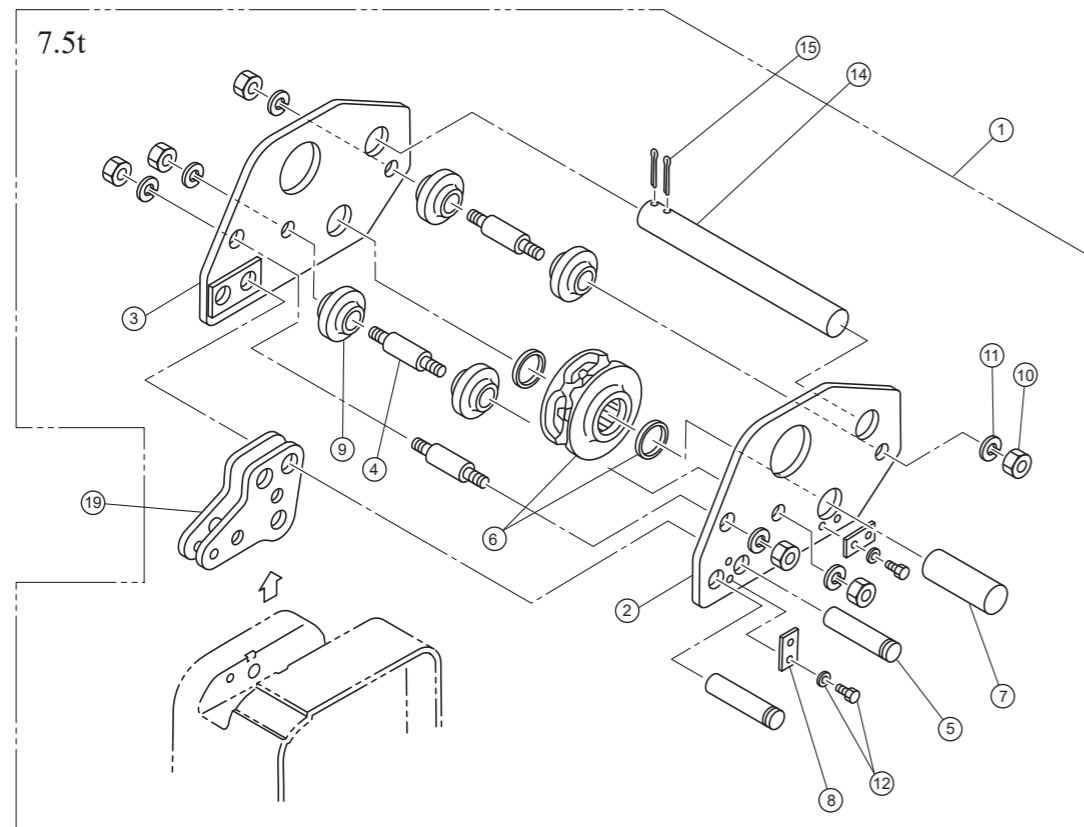
Suspension type

Figure No.	Part Number	Part Name	Quantity per unit	Product code		Remark
				ER2-100S	ER2-150S ER2-200S	
1	1401	Connection box complete set	1	ER2BFC1QS1A7	ER2BFC1PS1A7	230V Class
				ER2BFY1QS1A7	ER2BFY1PS1A7	400V Class
				ER2BFA1QS1A7	ER2BFA1PS1A7	500V Class
				ER2GHM1QS1A7	ER2GHM1PS1A7	230/460V Class
				ER2BGC1QS1A7	ER2BGC1PS1A7	For Direct Connection 230V Class
				ER2BGY1QS1A7	ER2BGY1PS1A7	For Direct Connection 400V Class
2	341	Holder A	1	ECP5924AA	←	
3	342	Holder B	1	ECP5924AB	←	
4	343	Packing	2	ECP5924AC	←	
5	344	Holder nut	2	ECP5924AD	←	
6	345	Holder cap	1	ECP5924AE	←	
7	347	Cord cover	1	ER1IS9347	←	
8	348	Machine screw with spring washer	4	J1AP2-5001010	←	For Cord cover
9	401	Connection box	1	MR1IS9401	←	
10	405	Connection box holder	1	MR1HS9405	←	
11	411	Connection box cover	1	MR1DS9411	←	
12	421	Connection box packing	1	MR1DS9421	←	
13	423	Spacer	4	M6SE010S9517	←	
14	424	Machine screw with spring washer	4	J1AP2-8001414	←	For Connection box holder
15	432	Machine screw with spring washer	2	J1AP2-6001010	←	
16	1445	Plate complete set	1	ER2BFC1QS1A8	←	230V Class
				ER2BFY1QS1A8	←	400V Class
				ER2BFA1QS1A8	←	500V Class
				ER2GHM1QS1A8	←	230/460V Class
17	5445	Plate assembly	1	MR2IS5445	←	
18	450	Machine screw with spring washer	1	J1AP2-5000808	←	
19	451	Machine screw with spring washer	3	J1AP2-4000808	←	For ground
20	452	Machine screw with spring washer	2	J1AP2-5001010	←	For Terminal
21	455	Machine screw with spring washer	2	J1AP2-4000808	←	For Transformer
22	461	Machine screw with spring washer	6	J1AW2-3000808	←	For Relay
23	853	Terminal 10P	1	ECP1610AA	←	
24	863	Lead wire	1set	ER2BEE1QS9A8	←	
				ER2GHM1QS9A8	←	230/460V Class
25	876	Relay	3	MGC42C2AA	←	
				MGC42C26A	←	230/460V Class
26	881	Transformer	1	TRF12C211	←	230V Class
				TRF12Y211	←	400V Class
				TRF12A211	←	500V Class
				TRF72V613	←	230/460V Class
27	891	Fuse holder	1	ECP92FZAA	←	
28	892	Fuse	1	ECP91FZ02	←	
29	894	Machine screw with spring washer	1	J1AP2-3000808	←	For Fuse holder
30	454	Machine screw with spring washer	4	J1AP2-5001010	←	For Plate assembly
31	818	Cord cover packing	1	M7SE010S9527	←	
32	422	Machine screw with spring washer	4	J1AP2-5001010	←	For connection box cover
33	1751	Relay cable P assembly	2	MR2IS1751	MR2JS1751	For Power supply and plug connection 230V, 400V, 500V Class
				MR2IS1759	MR2JS1759	For Power supply and plug connection 230/460V Class
				MR2IS2751	MR2JS2751	For Power supply and direct connection
34	1602	Holder assembly	2	ECP5924BB	←	
				ECP5924BC	←	230/460V Class

Figure No.	Part Number	Part Name	Quantity per unit	Product code		Remark
				ER2-100S	ER2-150S ER2-200S	
35	751	Cable	2	Z2CU402-0000	←	230/460V Class
				ZDCC402-0000	←	
36	752	Plug 4 P	2	ECP2304AE	←	230/460V Class
				ECP2304AF	←	
37	341	Holder A	2	ECP5924AA	←	For Direct connection
38	351	Cable packing	2	ECP6914AA	←	For Direct connection
39	1761	Relay cable S assembly	2	MR2IS1761	MR2JS1761	For Operation and plug connection 230V, 400V, 500V Class
				MR2IS1768	MR2JS1768	For Operation and plug connection 230/460V Class
				MR2IS2761	MR2JS2761	For Operation and direct connection
40	1602	Holder assembly	2	ECP5924BB	←	230/460V Class
				ECP5924BC	←	
41	761	Cable	2	Z3CR501-0000	←	230/460V Class
				ZDCK601-0000	←	
42	762	Plug 8P	2	ECP2108AB	←	230/460V Class
				ECP2108AC	←	
43	341	Holder A	2	ECP5924AA	←	For Direct connection
44	351	Cable packing	2	ECP6914AA	←	For Direct connection
65	1811	Socket 8P complete set	1	ER2IS1811	←	
66	5811	Socket 8P assembly	1	ER2IS5811	←	
67	814	Tapping flat head machine screw	4	J1AL2-4001212	←	
68	815	Socket holder	1	M6ME010S9529	←	
69	816	Cord chain stopper	1	M6FE005S9530	←	
70	817	Machine screw with spring washer	2	J1AP2-5001010	←	
71	818	Cord cover packing	1	M7SE010S9527	←	
72	820	Machine screw with spring washer	4	J1AP2-5001010	←	
45	1771	Power supply cable assembly	1	ZBZC12EJ1000	←	230/460V Class
				ZBZC12DH2000	←	
46	351	Cable packing	1	ECP6922AA	←	230/460V Class
				ECP6920AA	←	
47	1724	Cable support 22 assembly	1	M7HE010M1105	←	230/460V Class
		Cable support 19 assembly		M3EN010-1724	←	
48	741	Name plate G	1	E6LE010S9806	←	
49	771	Cable	1	Z2CU408-0000	←	230/460V Class
				SO(UL/CSA)4XAWG10	←	
50	1641	Cable hanger 21 assembly	n	M7HE010S1108	←	230/460V Class
		Cable hanger 15 assembly		M3YS010-1733	←	
51	1491	Cable support bar complete set	1	MR1DS1491	←	
52	491	Cable support bar	1	MR1DS9491	←	
53	492	Cable support arm	1	MR1DS9492	←	
54	497	Bolt	2	J1BA2-0802525	←	
55	498	Spring lock washer	2	J1WS012-20080	←	
56	499	Nut	2	J1NA002-20080	←	
57	1493	Wire guide assembly	1	MR1DS1493	←	
58	501	Support bar holder (plate)	1	MR1DS9501	←	
59	505	Bolt	2	J1BA2-0803030	←	
60	506	Spring lock washer	2	J1WS012-20080	←	
61	406	Socket bolt	4	J1BE1-0802020	←	For Connection box holder
62	407	Spring lock washer	4	J1WS011-20080	←	For Connection box holder

Top Suspension Plate Parts - Plate Suspension Type

ER2-075S/ER2-100L/ER2-100S



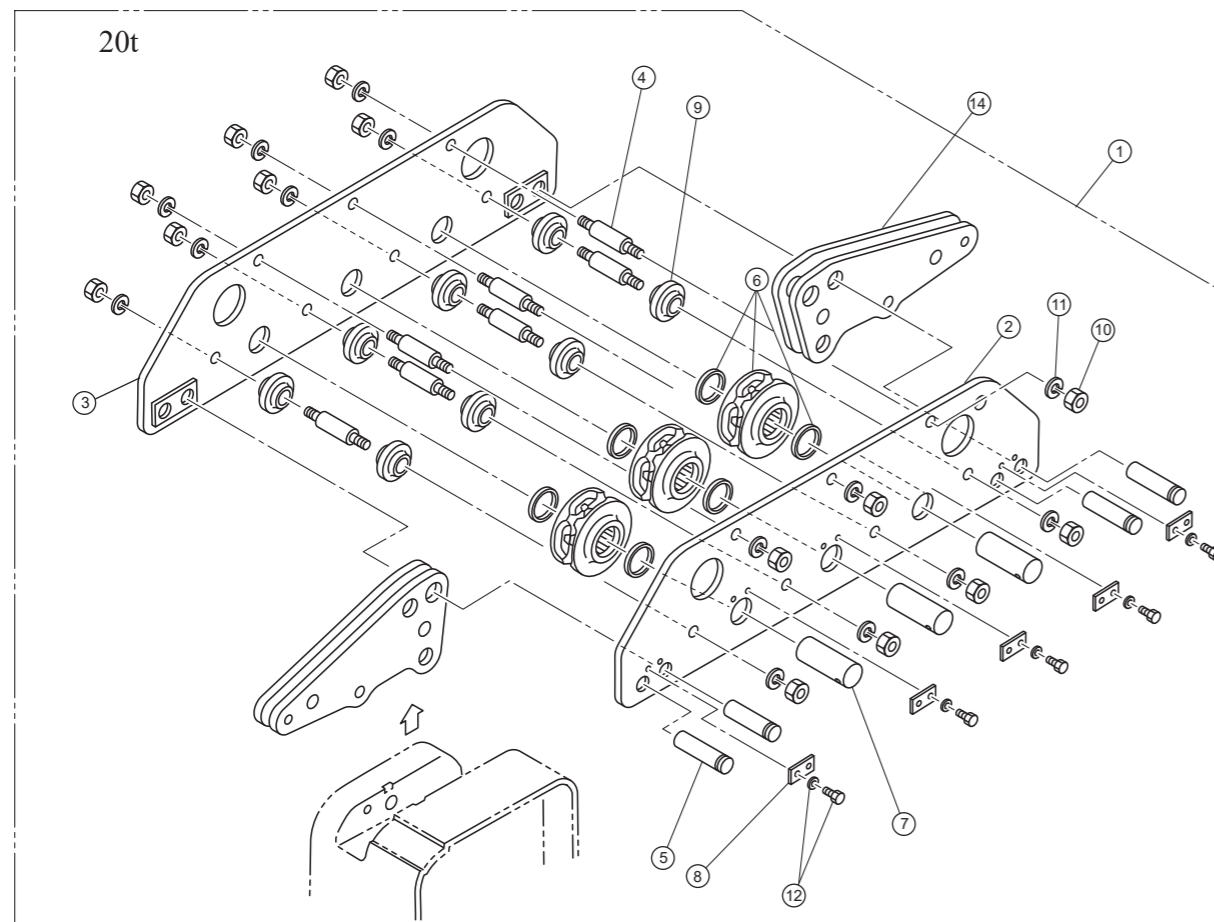
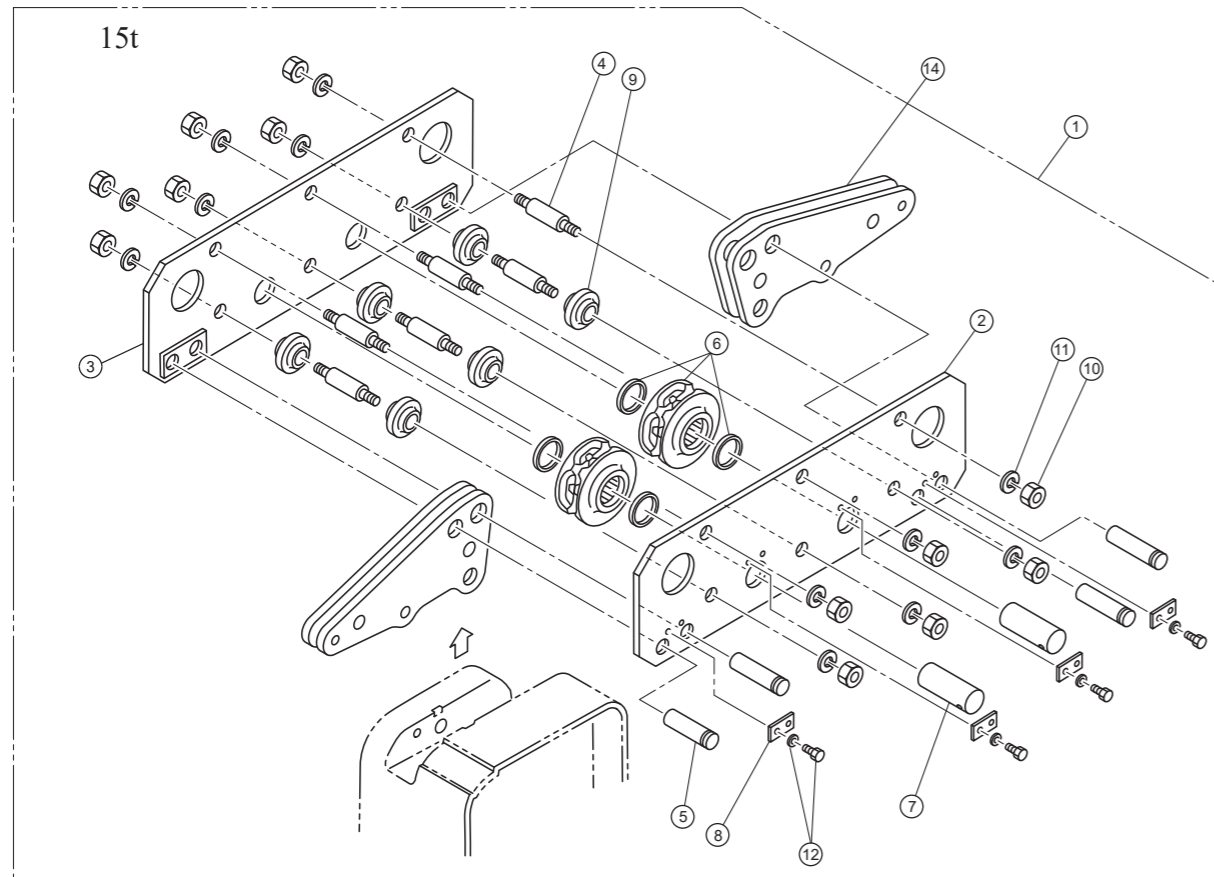
Top Suspension Plate Parts - Plate Suspension Type

ER2-075S/ER2-100L/ER2-100S

Figure No.	Part Number	Part Name	Quantity per unit		Product code			Remark
			ER2-075S	ER2-100L ER2-100S	ER2-075S	ER2-100L	ER2-100S	
1	1003	Top suspension plate assembly	1	1	ER2HS1003	ER2IS1003	←	
2	5003	Top suspension plate A assembly	1	1	ER2HS5003	ER2IS5003	←	
3	5004	Top suspension plate B assembly	1	1	ER2HS5004	ER2IS5004	←	
4	007	Top stay bolt	3	4	E7SE075S9007	←	←	
5	008	Suspension shaft	2	4	E6SE075S9008	←	←	
6	5051	Top idle sheave assembly	1	1	ER2HS5051	←	←	
7	053	Top shaft	1	1	E6SE075S9053	←	←	
8	056	Shaft stopper A	2	3	ER1HS9056	←	←	
9	062	Guide roller	4	4	E6SE075S9062	←	←	
10	081	Nut	6	8	J1NA001-30200	←	←	For top stay bolt
11	082	Spring Lock washer	6	8	J1WS011-20200	←	←	For top stay bolt
12	083	Socket bolt with spring lock washer	4	6	J1BG1-0801616	←	←	For shaft stopper A
14	010	Fixing shaft	1	1	E6SE075S9010	←	←	
	018	Fixing shaft (300)	1	1	E7SE075S9019	←	←	
15	089	Sprit pin	2	2	J1PW01-050050	←	←	For fixing shaft
16	017	Chain holder	X	1	X	ER1IL9017	X	For the end of load-side chain
17	041	Chain pin	X	1	X	S2SB030-9107	X	For the end of load-side chain
18	092	Snap ring	X	1	X	J1SR000-00021	X	For chain pin
19	5005	Connection yoke assembly	1	1	ER2HS5005	←	X	
		Connection yoke S assembly	X	2	X	X	ER2IS5005	

Top Suspension Plate Parts - Plate Suspension Type

ER2-150S/ER2-200S



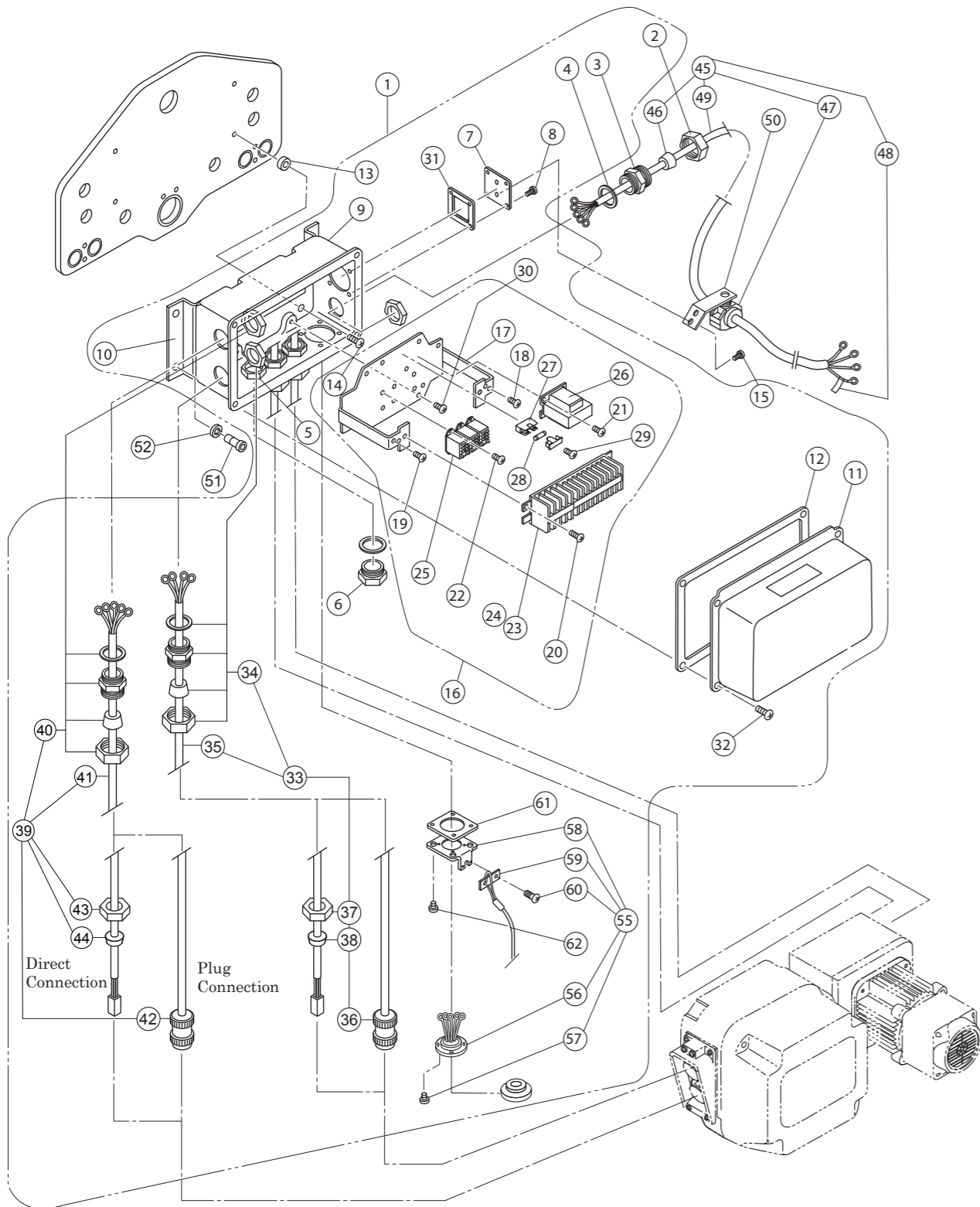
Top Suspension Plate Parts - Plate Suspension Type

ER2-150S/ER2-200S

Figure No.	Part Number	Part Name	Quantity per unit		Product code		Remark
			ER2-150S	ER2-200S	ER2-150S	ER2-200S	
1	1003	Top suspension plate assembly	1	1	ER2JS1003	ER2KS1003	
2	5003	Top suspension plate A assembly	1	1	ER2JS5003	ER2KS5003	
3	5004	Top suspension plate B assembly	1	1	ER2JS5004	ER2KS5004	
4	007	Top stay bolt	6	7	E7SE075S9007	←	
5	008	Suspension shaft	4	4	E6SE075S9008	←	
6	5051	Top idle sheave assembly	2	3	ER2HS5051	←	
7	053	Top shaft	2	3	E6SE075S9053	←	
8	056	Shaft stopper A	4	5	ER1HS9056	←	
9	062	Guide roller	6	8	E6SE075S9062	←	
10	081	Nut	12	14	J1NA001-30200	←	For top stay bolt
11	082	Spring lock washer	12	14	J1WS011-20200	←	For top stay bolt
12	083	Socket bolt with spring lock washer	8	10	J1BG1-0801616	←	For shaft stopper A
14	5005	Connection yoke S assembly	2	2	ER2IS5005	←	

Control Station and Cable (Hook Type)

ER2-100S/ER2-150S/ER2-200S



Control Station and Cable (Hook Type)

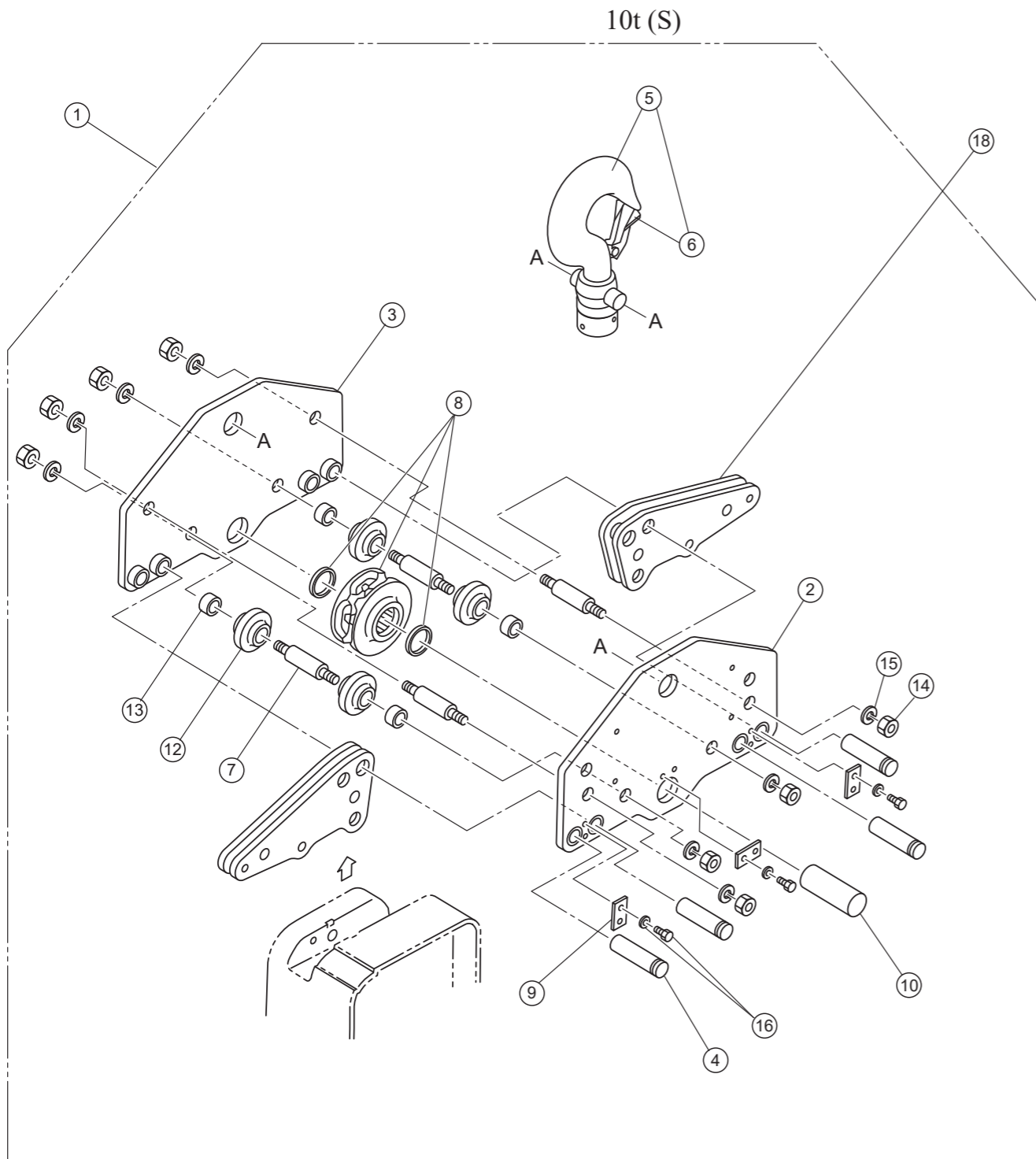
ER2-100S/ER2-150S/ER2-200S

Figure No.	Part Number	Part Name	Quantity per unit	Product code		Remark
				ER2-100S	ER2-150S ER2-200S	
1	1401	Connection box complete set	1	ER2BFC1QS1A7	ER2BFC1PS1A7	230V Class
				ER2BFY1QS1A7	ER2BFY1PS1A7	400V Class
				ER2BFA1QS1A7	ER2BFA1PS1A7	500V Class
				ER2GHM1QS1A7	ER2GHM1PS1A7	230/460V Class
				ER2BGC1QS1A7	ER2BGC1PS1A7	For Direct Connection 230V Class
				ER2BGY1QS1A7	ER2BGY1PS1A7	For Direct Connection 400V Class
2	341	Holder A	1	ECP5924AA	←	
3	342	Holder B	1	ECP5924AB	←	
4	343	Packing	2	ECP5924AC	←	
5	344	Holder nut	2	ECP5924AD	←	
6	345	Holder cap	1	ECP5924AE	←	
7	347	Cord cover	1	ER1IS9347	←	
8	348	Machine screw with spring washer	4	J1AP2-5001010	←	For Cord cover
9	401	Connection box	1	MR1IS9401	←	
10	405	Connection box holder	1	MR1HS9405	←	
11	411	Connection box cover	1	MR1DS9411	←	
12	421	Connection box packing	1	MR1DS9421	←	
13	423	Spacer	4	M6SE010S9517	←	
14	424	Machine screw with spring washer	4	J1AP2-8001414	←	For Connection box holder
15	432	Machine screw with spring washer	2	J1AP2-6001010	←	
16	1445	Plate complete set	1	ER2BFC1QS1A8	←	230V Class
				ER2BFY1QS1A8	←	400V Class
				ER2BFA1QS1A8	←	500V Class
				ER2GHM1QS1A8	←	230/460V Class
17	5445	Plate assembly	1	MR2IS5445	←	
18	450	Machine screw with spring washer	1	J1AP2-5000808	←	
19	451	Machine screw with spring washer	3	J1AP2-4000808	←	For ground
20	452	Machine screw with spring washer	2	J1AP2-5001010	←	For Terminal
21	455	Machine screw with spring washer	2	J1AP2-4000808	←	For Transformer
22	461	Machine screw with spring washer	6	J1AW2-3000808	←	For Relay
23	853	Terminal 10P	1	ECP1610AA	←	
24	863	Lead wire	1set	ER2BEE1QS9A8	←	
				ER2GHM1QS9A8	←	230/460V Class
25	876	Relay	3	MGC42C2AA	←	
				MGC42C26A	←	230/460V Class
26	881	Transformer	1	TRF12C211	←	230V Class
				TRF12Y211	←	400V Class
				TRF12A211	←	500V Class
				TRF72V613	←	230/460V Class
27	891	Fuse holder	1	ECP92FZAA	←	
28	892	Fuse	1	ECP91FZ02	←	
29	894	Machine screw with spring washer	1	J1AP2-3000808	←	For Fuse holder
30	454	Machine screw with spring washer	4	J1AP2-5001010	←	For Plate assembly
31	818	Cord cover packing	1	M7SE010S9527	←	
32	422	Machine screw with spring washer	4	J1AP2-5001010	←	For connection box cover
33	1751	Relay cable P assembly	2	MR2IS1751	MR2JS1751	For Power supply and plug connection 230V, 400V, 500V Class
				MR2IS1759	MR2JS1759	For Power supply and plug connection 230/460V Class
				MR2IS2751	MR2JS2751	For Power supply and direct connection
34	1602	Holder assembly	2	ECP5924BB	←	
				ECP5924BC	←	230/460V Class

Figure No.	Part Number	Part Name	Quantity per unit	Product code		Remark
				ER2-100S	ER2-150S ER2-200S	
35	751	Cable	2	Z2CU402-0000	←	230/460V Class
				ZDCC402-0000	←	
36	752	Plug 4 P	2	ECP2304AE	←	230/460V Class
				ECP2304AF	←	
37	341	Holder A	2	ECP5924AA	←	For Direct connection
38	351	Cable packing	2	ECP6914AA	←	For Direct connection
39	1761	Relay cable S assembly	2	MR2IS1761	MR2JS1761	For Operation and plug connection 230V, 400V, 500V Class
				MR2IS1768	MR2JS1768	For Operation and plug connection 230/460V Class
				MR2IS2761	MR2JS2761	For Operation direct connection
40	1602	Holder assembly	2	ECP5924BB	←	230/460V Class
				ECP5924BC	←	
41	761	Cable	2	Z3CR501-0000	←	230/460V Class
				ZDCK601-0000	←	
42	762	Plug 8P	2	ECP2108AB	←	230/460V Class
				ECP2108AC	←	
43	341	Holder A	2	ECP5924AA	←	For Direct connection
44	351	Cable packing	2	ECP6914AA	←	For Direct connection
55	1811	Socket 8P complete set	1	ER2IS1811	←	
56	5811	Socket 8P assembly	1	ER2IS5811	←	
57	814	Tapping flat head machine screw	4	J1AL2-4001212	←	
58	815	Socket holder	1	M6ME010S9529	←	
59	816	Cord chain stopper	1	M6FE005S9530	←	
60	817	Machine screw with spring washer	2	J1AP2-5001010	←	
61	818	Cord cover packing	1	M7SE010S9527	←	
62	820	Machine screw with spring washer	4	J1AP2-5001010	←	
45	1771	Power supply cable assembly	1	ZBZC12EJ1000	←	230/460V Class
				ZBZC12DH2000	←	
46	351	Cable packing	1	ECP6922AA	←	230/460V Class
				ECP6920AA	←	
47	1724	Cable support 22 assembly	1	M7HE010M1105	←	230/460V Class
		Cable support 19 assembly		M3EN010-1724	←	
48	741	Name plate G	1	E6LE010S9806	←	
49	771	Cable	1	Z2CU408-0000	←	230/460V Class
				SO(UL/CSA)4XAWG10	←	
50	431	Cable support arm	1	ER1IS9431	←	
51	406	Socket bolt	4	J1BE1-0802020	←	For Connection box holder
52	407	Spring lock washer	4	J1WS011-20080	←	For Connection box holder

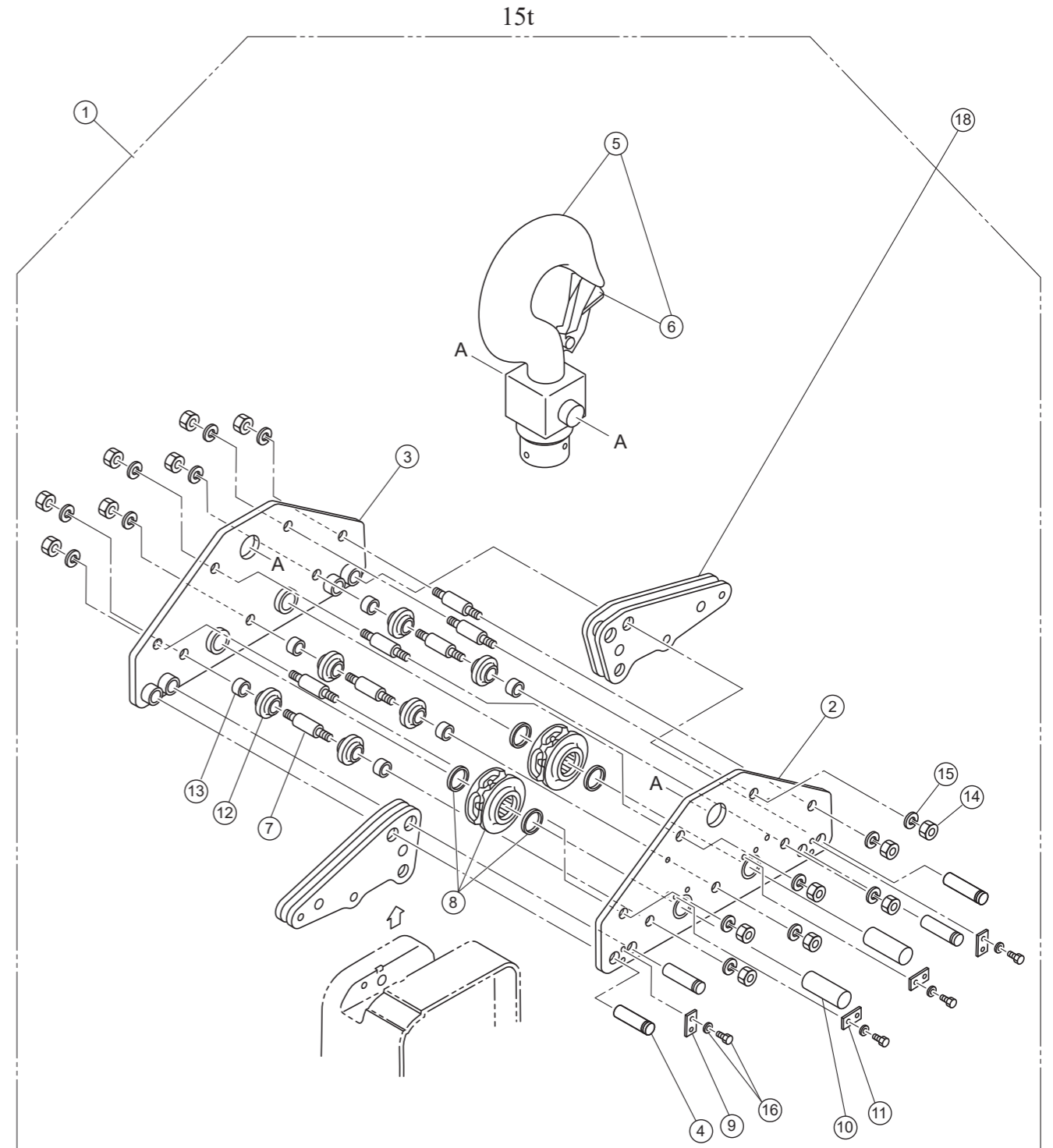
Top Hook (Hook Type)

ER2-100S

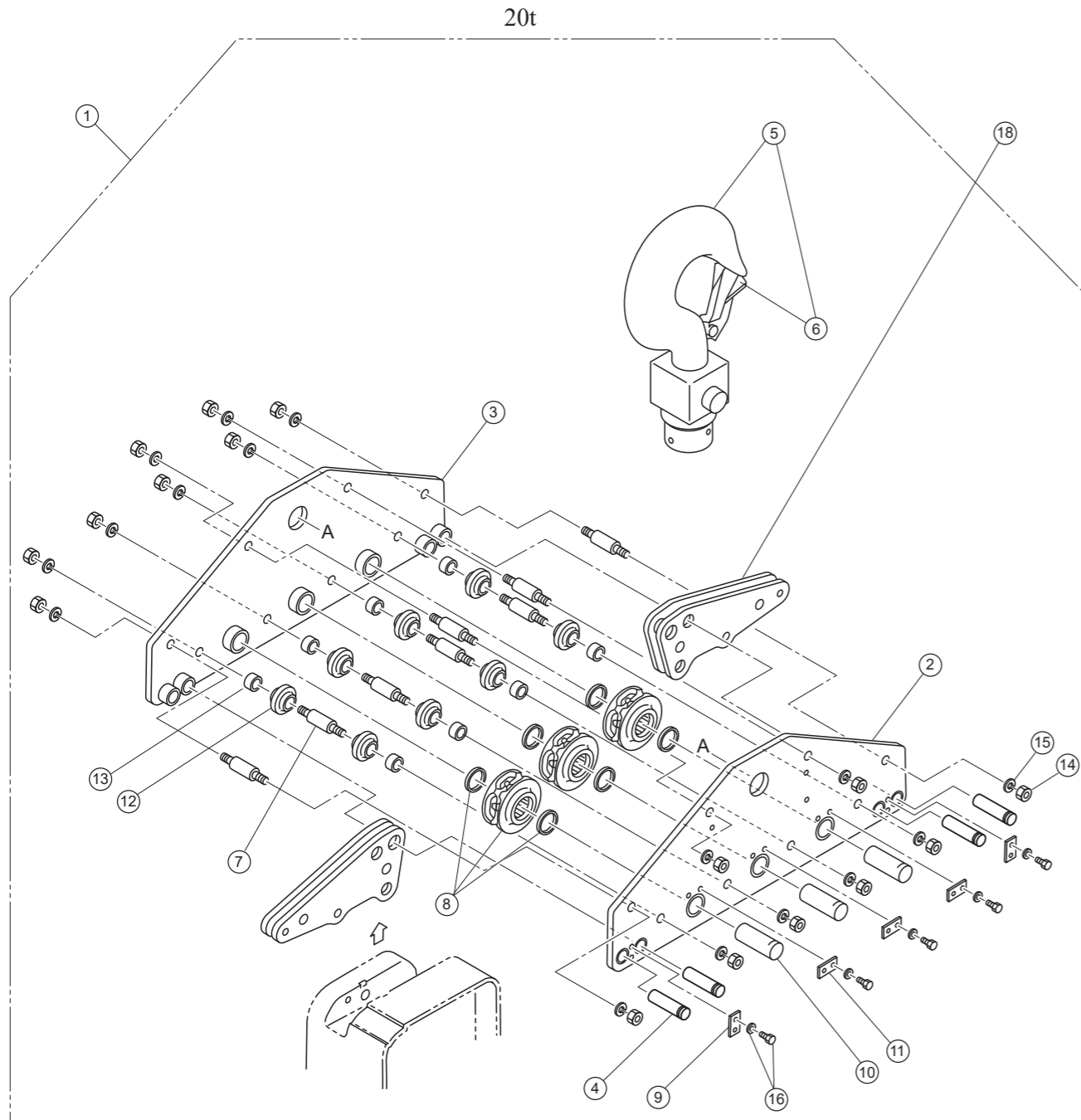


Top Hook (Hook Type)

ER2-150S



ER2-200S

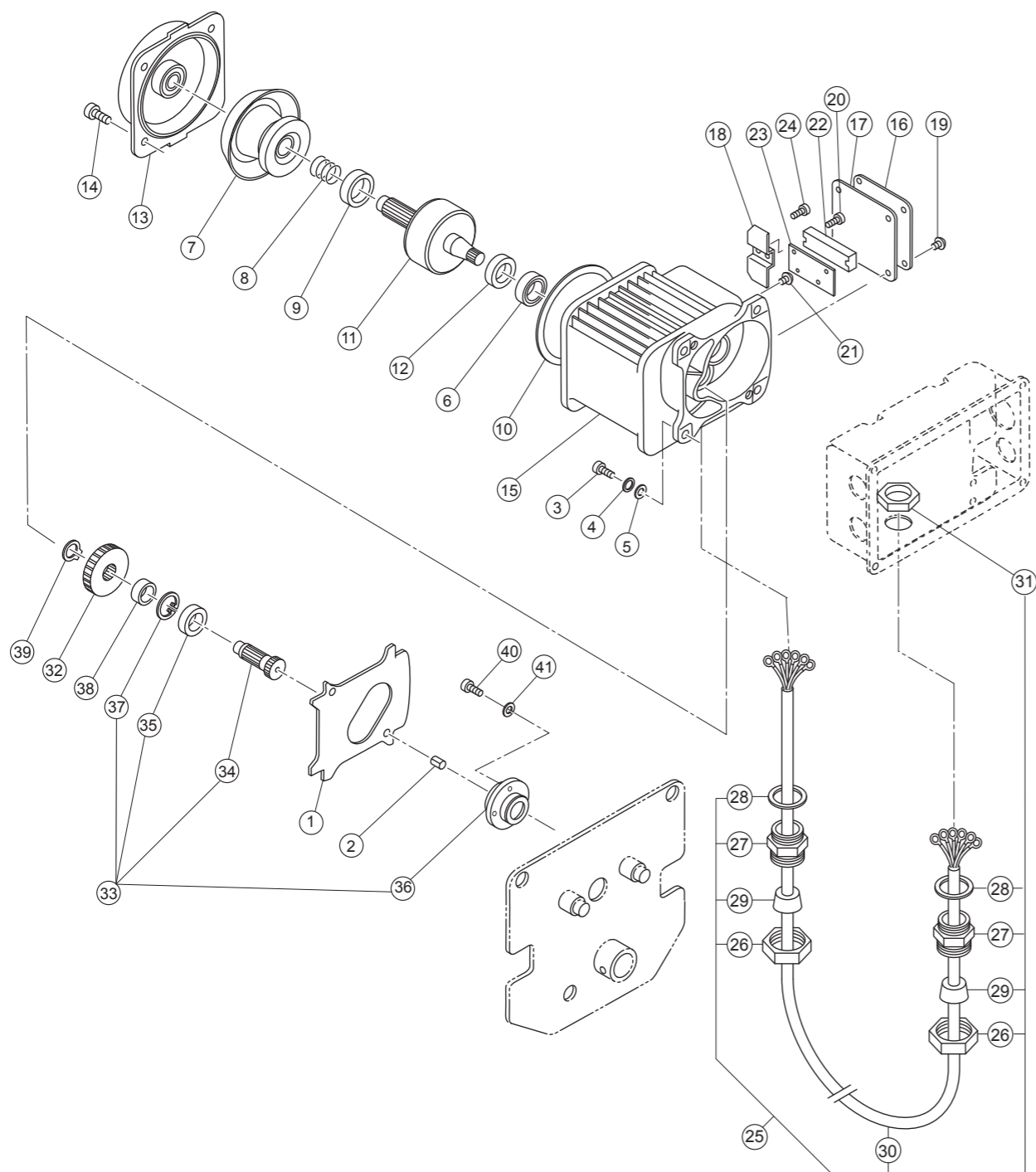


ER2-100S/ER2-150S/ER2-200S

Figure No.	Part Number	Part Name	Quantity per unit			Product code			Remark
			ER2-100S	ER2-150S	ER2-200S	ER2-100S	ER2-150S	ER2-200S	
1	1011	Top hook complete set	1	1	1	ER2IS1011	ER2JS1011	ER2KS1011	
2	5011	Top suspension plate A assembly	1	1	1	ER2IS5011	ER2JS5011	ER2KS5011	
3	5012	Top suspension plate B assembly	1	1	1	ER2IS5012	ER2JS5012	ER2KS5012	
4	013	Suspender shaft B	4	4	4	E6SE100S9013	E6SE150S9013	←	
5	2121	Bottom hook assembly	1	1	1	ER2IS2121	ER2JS2121	ER2KS2121	
6	1071	Hook latch assembly	1	1	1	C2BA150-1071	C2BA200-1071	C2BA300-1071	
7	038	Bottom stay bolt	4	7	8	E7SE075S9038	E7SE150S9038	←	
8	5052	Bottom idle sheave assembly	1	2	3	ER2HS5052	←	←	
9	056	Shaft stopper A	3	2	2	ER1IS9056	←	←	
10	057	Top shaft B	1	2	3	E6SE100S9057	E6SE150S9057	←	
11	060	Shaft stopper B	X	2	3	X	ER1JS9060	←	
12	062	Guide roller	4	6	8	E6SE075S9062	←	←	
13	065	Bottom collar	4	6	8	E6SE075S9065	E6SE150S9065	←	
14	081	Nut	8	14	16	J1NA001-30200	←	←	
15	082	Spring lock washer	8	14	16	J1WS011-20200	←	←	
16	083	Socket bolt with spring lock washer	6	8	10	J1BG1-0801616	←	←	For shaft stopper A, B
18	5005	Connection yoke S assembly	2	2	2	ER2IS5005	←	←	

Motor / Gear related

MR2-075L/MR2-100L/MR2-150L/MR2-200L



Motor / Gear related

MR2-075L/MR2-100L/MR2-150L/MR2-200L

Motor related

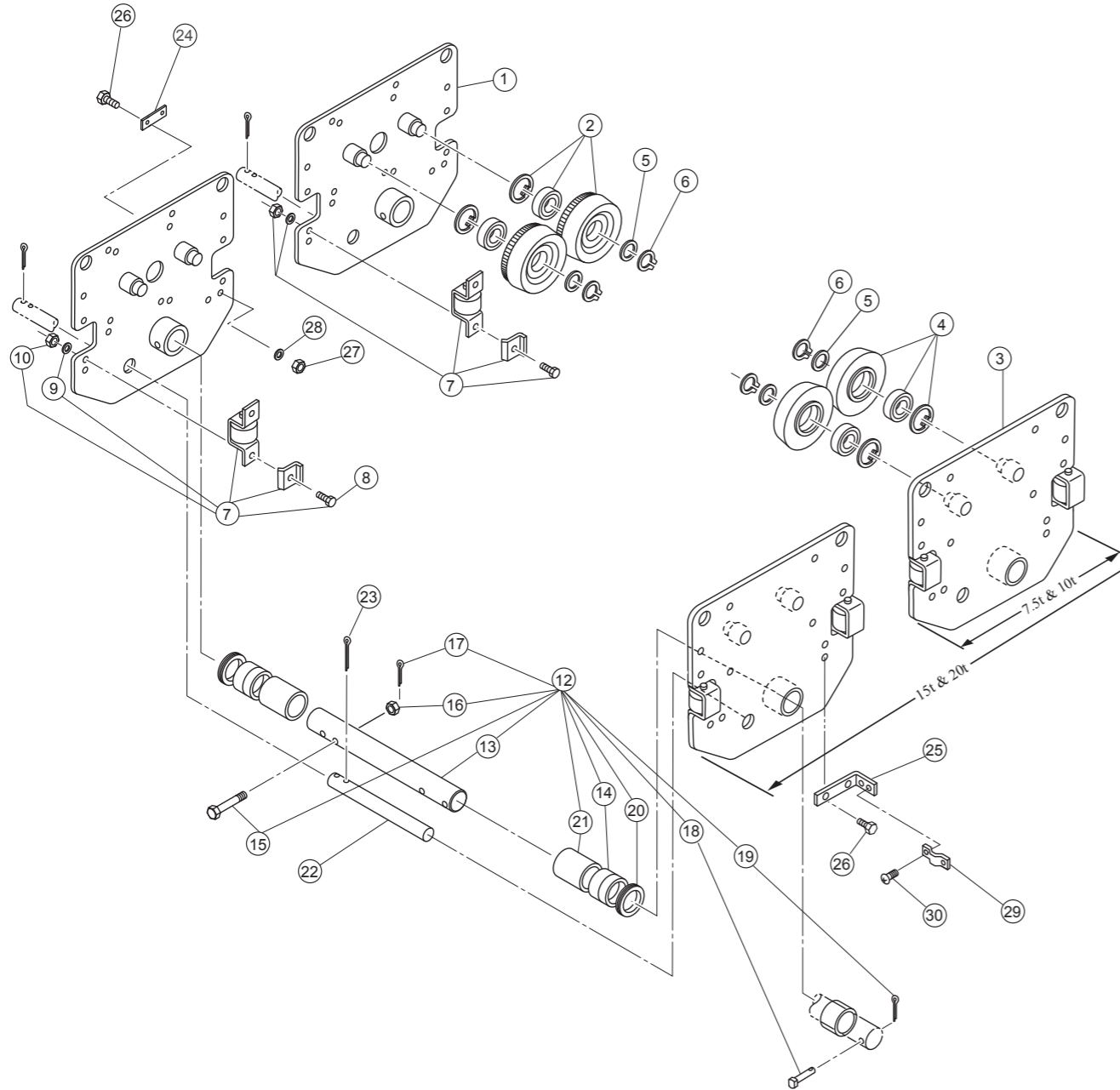
Figure No.	Part Number	Part Name	Quantity per unit			Product code		Remark
			MR2-075L MR2-100L	MR2-150L MR2-200L	MR2-075L MR2-100L	MR2-150L MR2-200L		
1	248	Gear frame packing	1	2	MR1IS9248	←		
2	249	Set pin	2	4	MR1DS9249	←	For gear frame and frame G	
3	250	Bolt	4	8	J1BA1-0802525	←	For gear frame. Integrated type with spring/flat washer is available. (251 and 252 are not necessary.)	
4	251	Spring lock washer	4	8	J1WS011-20080	←	For gear frame	
5	252	Washer	4	8	J1WA011-00080	←	For gear frame	
6	253	Ball bearing	1	2	J1GR0C0-06204	←	For gear frame on motor side	
7	5261	Brake drum assembly	1	2	MR1DS5261	←		
8	264	Brake spring	1	2	M3ES010-9304	←		
9	265	Bumper	1	2	MR1DS9265	←		
10	281	Guard	1	2	MR1DS9281	←		
11	5291	Motor shaft with rotor	1	2	MR1GS5291	←		
12	293	Oil seal	1	2	MR1DS9293	←		
13	1301	Motor cover assembly	1	2	MR1DS1301	←		
14	304	Socket bolt	4	8	J1BE2-0802222	←	For motor cover	
15	5321	Motor frame with stator	1	2	MR2SJC50S5A2	←	230V Class	
					MR2SJY50S5A2	←	400V Class	
					MR2SKK50S5A2	←	500V Class	
					MR2SKV50S5A2	←	230/460V Class	
16	324	Terminal cover	1	2	M7SE010B9206	←		
17	325	Terminal cover packing	1	2	MR1GS9325	←		
18	326	Coil cover	1	2	MR1DS9326	←		
19	331	Machine screw with spring washer	4	8	J1AP2-5001010	←	For terminal cover	
20	332	Machine screw with spring washer	2	4	J1AW2-4002020	←	For terminal 6P	
21	334	Machine screw with spring washer	1	2	J1AP2-4000808	←	For ground	
22	851	Terminal 6P	1	2	M6FE005S9516	←		
					ECP1306AB	←	500V, 230/460V Class	
23	855	Terminal plate holder	1	2	MR1DS9855	←	500V, 230/460V Class	
24	857	Flat head machine screw	2	4	J1AL2-4001010	←	For terminal plate holder	
25	1791	Trolley cable assembly	1	2	MR1HS1791	←	230V, 400V Class	
					MR1HS1792	←	500V Class	
					MR1HS1793	←	230/460V Class	
26	341	Holder A	2	4	ECP5924AA	←		
27	342	Holder B	2	4	ECP5924AB	←		
28	343	Packing	2	4	ECP5924AC	←		
					ECP6912AA	←	230V, 400V Class	
					ECP6914AA	←	500V Class	
29	351	Cable packing	2	4	ECP6916AA	←	230/460V Class	
					Z2CU401-0000	←		
					Z2CU601-0000	←	500V Class	
30	791	Cable	1	2	ZDCC601-0000	←	230/460V Class	
					ECP5924AD	←		
31	344	Holder nut	1	2	ECP5924AD	←		

Gear related

Figure No.	Part Number	Part Name	Quantity per unit			Product code		Remark
			MR2-075L MR2-100L	MR2-150L MR2-200L	MR2-075L MR2-100L	MR2-150L MR2-200L		
32	241	Gear #2	1	2	MR1IS9241	←		
33	5242	Gear #3 assembly	1	2	MR1IS5242	←		
34	242	Gear #3	1	2	MR1IS9242	←		
35	245	Ball bearing	2	4	J1GR020-06205	←	For bearing holder	
36	257	Bearing holder	1	2	MR1IS9257	←		
37	258	Snap ring	1	2	J1SR000-00052	←	For bearing holder	
38	244	Spacer	1	2	MR1IS9244	←		
39	246	Snap ring	1	2	J1SS000-00025	←	For gear 3	
40	259	Socket bolt	4	8	J1BE1-0603030	←		
41	260	Spring lock washer	4	8	J1WS011-20060	←		

Frame and Wheel / Suspension shaft related

MR2-075L/MR2-100L/MR2-150L/MR2-200L



Frame and Wheel / Suspension shaft related

MR2-075L/MR2-100L/MR2-150L/MR2-200L

Frame and Wheel related

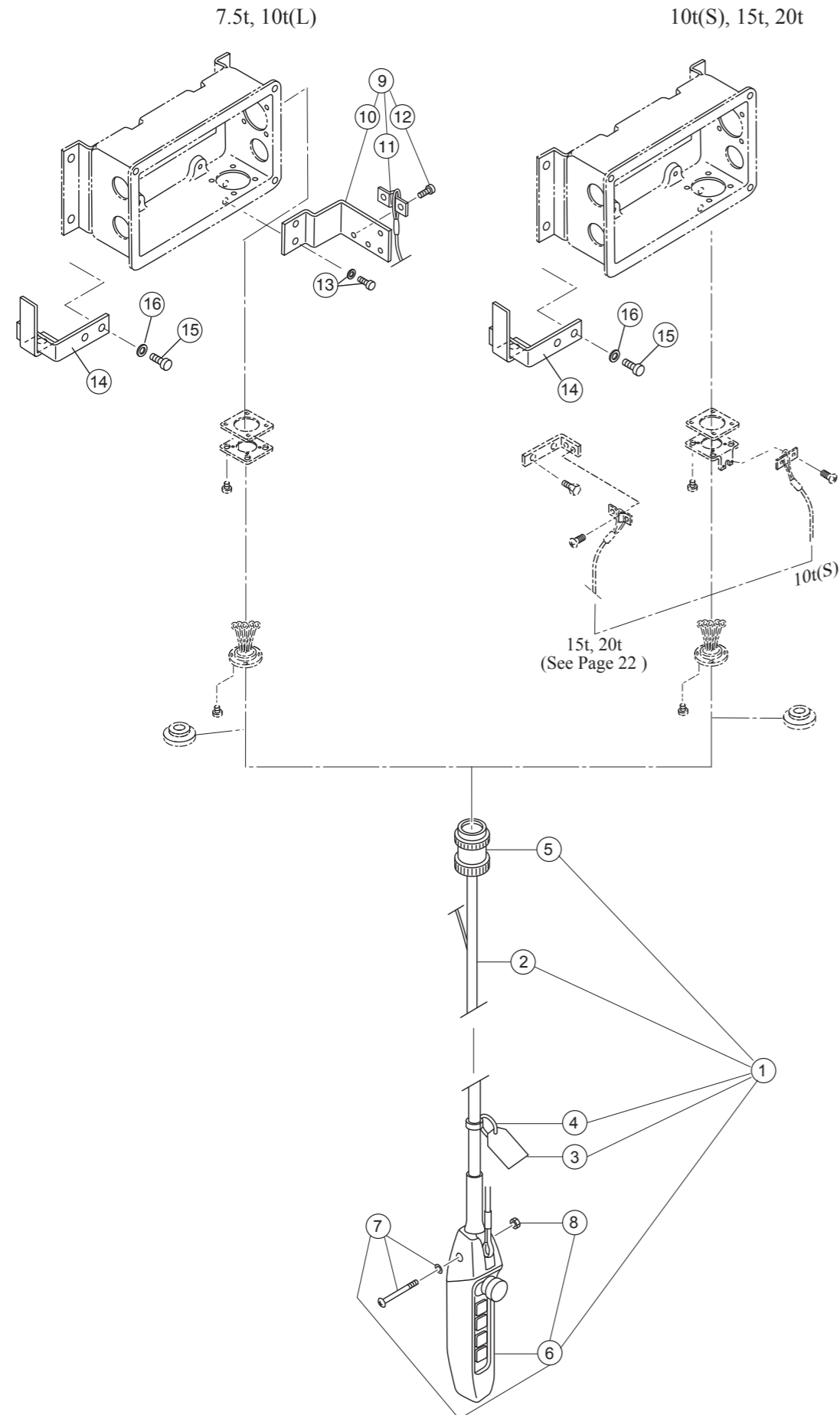
Figure No.	Part Number	Part Name	Quantity per unit		Product code		Remark
			MR2-075L MR2-100L	MR2-150L MR2-200L	MR2-075L MR2-100L	MR2-150L MR2-200L	
1	5201	Side plate G assembly	1	2	MR1IS5201	←	
2	1231	Track wheel G assembly	2	4	M6SE100S1101	←	For I Beam
	1237	Track wheel GF assembly			M6SE100S1105	←	For wide beam and H beam
3	5202	Side plate S assembly	1	2	MR1IS5202	←	
4	1232	Track wheel S assembly	2	4	M6SE100S1102	←	For I Beam
	1238	Track wheel SF assembly			M6SE100S1106	←	For wide beam and H beam
5	235	Washer	4	8	M6SE100S9104	←	For truck wheel G, GF, S, SF
6	236	Snap ring	4	8	J1SS000-00045	←	For truck wheel G, GF, S, SF
7	1211	Side roller complete set	4	8	MR1GS1211SU_01	←	With stopper plate
8	219	Bolt	8	16	J1BA1-1604545	←	
9	220	Spring lock washer	8	16	J1WS011-20160	←	
10	221	Nut	8	16	J1NA001-130160	←	

Suspension shaft related

Figure No.	Part Number	Part Name	Quantity per unit		Product code		Remark
			MR2-075L MR2-100L	MR2-150L MR2-200L	MR2-075L MR2-100L	MR2-150L MR2-200L	
12	1101	Suspension shaft complete set (220)	1	2	M6SS100S1115	←	For beam width 150-220
13	115	Suspension shaft (220)	1	2	M6SE100S9115	←	
14	117	Collar B	6	12	M6SE100S9117	←	
15	161	Bolt	1	2	M6SE100S9161	←	
16	162	Slotted nut	1	2	J1NL002-20160	←	
17	163	Spilt pin	1	2	J1PW01-040030	←	
18	164	Shaft stopper	1	2	M6SE100S9164	←	
19	165	Sprit pin	1	2	J1PW02-040028	←	
20	118	Thin spacer	8	16	M6SE100S9116	←	
12	2101	Suspension shaft complete set (300)	1	2	M6SS100S1181	←	For beam width 221-305
13	181	Suspension shaft (300)	1	2	M6SE100S9181	←	
14	117	Collar B	7	14	M6SE100S9117	←	
15	161	Bolt	1	2	M6SE100S9161	←	
16	162	Slotted nut	1	2	J1NL002-20160	←	
17	163	Spilt pin	1	2	J1PW01-040030	←	
18	164	Shaft stopper	1	2	M6SE100S9164	←	
19	165	Sprit pin	1	2	J1PW02-040028	←	
20	118	Thin spacer	8	16	M6SE100S9116	←	
21	182	Fixing collar (300)	2	4	M6SE100S9182	←	
22	010	Fixing shaft	1	X	M6SE075S9010	X	For standard beam
	018	Fixing shaft (300)	1	X	M7SE075S9019	X	For wide beam
23	089	Spilt pin	2	X	J1PW01-050050	X	
24	224	Connection plate	X	1	X	M6SE200S9105	
25	225	Connection plate S	X	1	X	MR1JS9225	
26	226	Bolt	X	4	X	M6SE200S9106	
27	227	Nut	X	4	X	J1NA002-10120	
28	228	Spring lock washer	X	4	X	J1WS012-20120	
29	816	Cord chain stopper	X	1	X	E6LE010S9614	
30	817	Machine screw with spring washer	X	2	X	J1AP2-6000808	

Push Button (Plug connection)

MR2-075L/MR2-100L/MR2-150L/MR2-200L



Push Button (Plug connection)

MR2-075L/MR2-100L/MR2-150L/MR2-200L

7.5t, 10t(L)

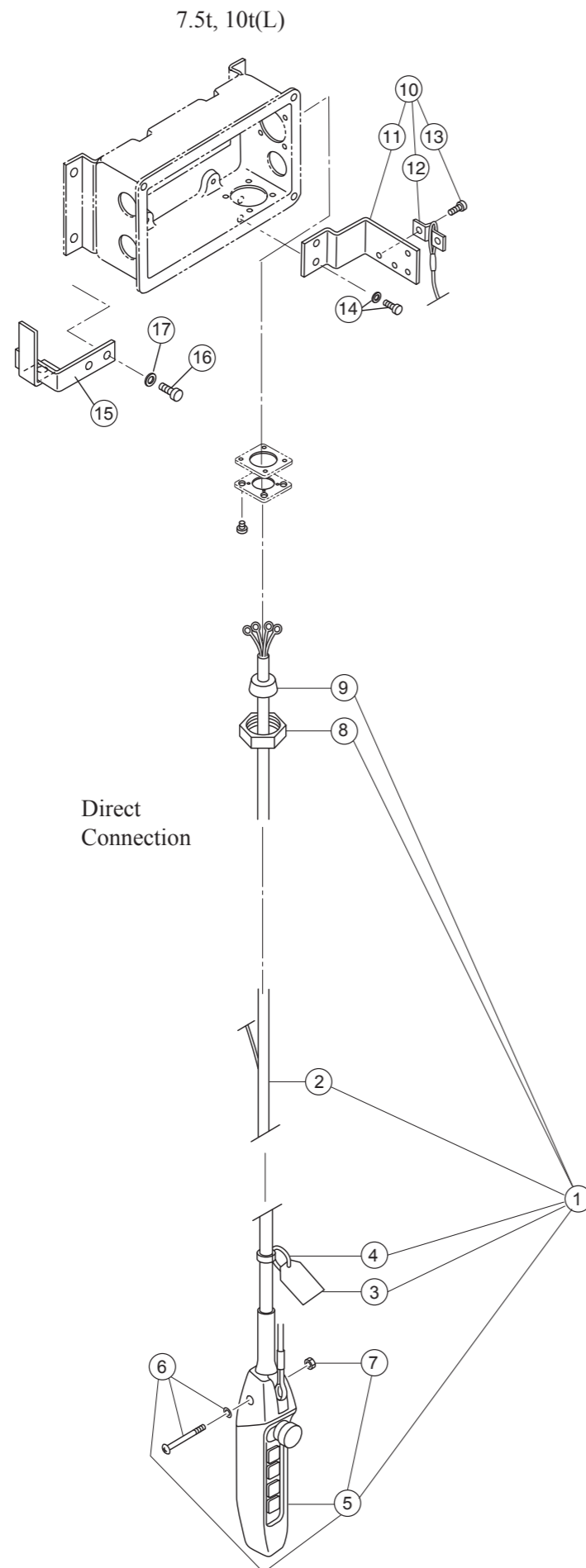
Figure No.	Part Number	Part Name	Quantity per unit	Product code		Remark
				MR2-075L	MR2-100L with ER2-100L	
1	1781	Push button cord TR complete set	1	ZB1102EW1000	←	230/460V Class
				ZB1102EI5000	←	
2	781	Cable	1	Z3CR701-0000	←	230/460V Class
				Z3CH601-0000	←	
3	783	Warning tag PB	1	SWD9013AB	←	230/460V Class
				SWD9013AD	←	
4	784	Tag holder	1	E7SE003S9787	←	
5	792	Plug 8P	1	ECP2108AC	←	230/460V Class
				ECP2108AB	←	
6	1801	5 push button switch assembly	1	SWDB110AB	←	230/460V Class
				SWDH110AD	←	
7	788	Machine screw with spring washer	1	J1AP2-4002608	←	
8	789	Nut	1	J1NA004-10040	←	
9	1481	Bar holder assembly	1	MR1DS1481	←	
10	481	Bar holder	1	MR1DS9481	←	
11	816	Cord chain stopper	1	E6LE010S9614	←	
12	817	Machine screw with spring washer	2	J1AP2-6001212	←	
13	482	Socket bolt with spring lock washer	2	J1BG1-1002828	←	
14	511	Cable hanger pusher	1	T2AQ100-9101	←	
15	516	Bolt	2	J1BA1-1003026	←	
16	517	Spring lock washer	2	J1WS011-20100	←	

10t(S), 15t, 20t

Figure No.	Part Number	Part Name	Quantity per unit	Product code		Remark
				MR2-100L with ER2-100S	MR2-150L MR2-200L	
1	1781	Push button cord TR complete set	1	ZB1102FW1000	ZB1102GW1000	230/460V Class
				ZB1102FI5000	ZB1102GI5000	
2	781	Cable	1	Z3CR701-0000	←	230/460V Class
				Z3CH601-0000	←	
3	783	Warning tag PB	1	SWD9013AB	←	230/460V Class
				SWD9013AD	←	
4	784	Tag holder	1	E7SE003S9787	←	
5	792	Plug 8P	1	ECP2108AC	←	230/460V Class
				ECP2108AB	←	
6	1801	5 push button switch assembly	1	SWDB110AB	←	230/460V Class
				SWDH110AD	←	
7	788	Machine screw with spring washer	1	J1AP2-4002608	←	
8	789	Nut	1	J1NA004-10040	←	
14	511	Cable hanger pusher	1	T2AQ100-9101	←	
15	516	Bolt	2	J1BA1-1003026	←	
16	517	Spring lock washer	2	J1WS011-20100	←	

Push Button (Direct connection)

MR2-075L/MR2-100L



Push Button (Direct connection)

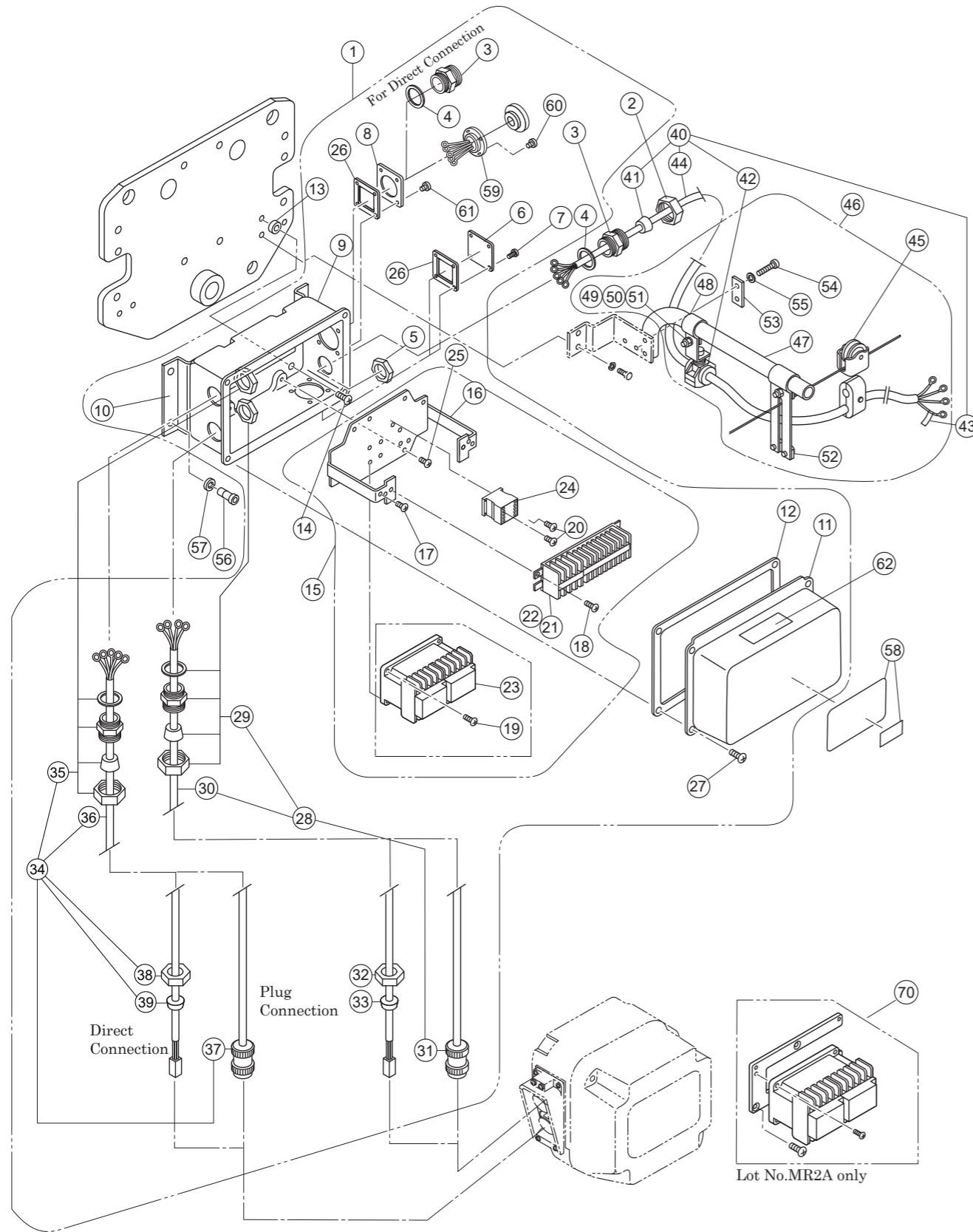
MR2-075L/MR2-100L

7.5t, 10t(L)

Figure No.	Part Number	Part Name	Quantity per unit	Product code		Remark
				MR2-075L	MR2-100L with ER2-100L	
1	1781	Push button cord TR complete set	1	ZBSS02EW1000	←	230V, 400V Class
2	781	Cable	1	Z3CR701-0000	←	
3	783	Warning tag PB	1	SWD9013AB	←	
4	784	Tag holder	1	E7SE003S9787	←	
5	1801	5 push button switch assembly	1	SWDB110AB	←	
6	788	Machine screw with spring washer	1	J1AP2-4002608	←	
7	789	Nut	1	J1NA004-10040	←	
8	341	Holder A	1	ECP 5924AA	←	
9	351	Cable packing	1	ECP 6916AA	←	
10	1481	Bar holder assembly	1	MR1DS1481	←	For Cable support bar
11	481	Bar holder	1	MR1DS9481	←	
12	816	Cord chain stopper	1	E6LE010S9614	←	
13	817	Machine screw with spring washer	2	J1AP2-6001212	←	
14	482	Socket bolt with spring lock washer	2	J1BG1-1002828	←	
15	511	Cable hanger pusher	1	T2AQ100-9101	←	
16	516	Bolt	2	J1BA1-1003026	←	
17	517	Spring lock washer	2	J1WS011-20100	←	

Control Station and Cable - Plate Suspension Type (7.5t, 10t(L))

MR2-075L, MR2-100L with ER2-100L



Control Station and Cable - Plate Suspension Type (7.5t, 10t(L))

MR2-075L, MR2-100L with ER2-100L

Suspension type

Figure No.	Part Number	Part Name	Quantity per unit	Product code	Remark
				MR2-075L MR2-100L with ER2-100L	
1	1401	Connection box complete set	1	MR2REE75M1A4	230V, 400V Class
				MR2RFC75M1A4	500V Class
				MR2RHM75M1A4	230/460V Class
				MR2RSC75M1A4	For Direct connection
2	341	Holder A	1	ECP5924AA	
3	342	Holder B	1/2	ECP5924AB	Direct connection provides 2 pieces
4	343	Packing	1/2	ECP5924AC	Direct connection provides 2 pieces
5	344	Holder nut	1/2	ECP5924AD	Direct connection provides 2 pieces
6	347	Cord cover	1	E6LE010S9630	
7	348	Machine screw with spring washer	4	J1AP2-5001010	
8	346	Plate P	1	ECP5924AH	For Plug connection
	349	Plate D		ECP5924AF	For Direct connection
9	401	Connection box	1	MR1DS9401	
10	405	Connection box holder	1	MR1HS9405	
11	411	Connection box cover	1	MR1DS9411	
12	421	Connection box packing	1	MR1DS9421	
13	423	Spacer	4	M6SE010S9517	
14	424	Machine screw with spring washer	4	J1AP2-8001414	For connection box holder
15	1445	Plate complete set	1	MR2REE75M1A5	230V, 400V Class
				MR2RFC75M1A5	500V Class
				MR2RHM75M1A5	230/460V Class
16	5445	Plate assembly	1	MR2DS5445	
17	451	Machine screw with spring washer	3	J1AP2-4000808	For ground
18	452	Machine screw with spring washer	2	J1AW2-4001212	For Terminal
19	453	Machine screw with spring washer	2	J1AP2-4001212	For Contactor 871
20	457	Machine screw with spring washer	2	J1AP2-4001212	For Contactor 873
21	853	Terminal 16P	1	ECP1416AA	
22	863	Lead wire	1set	MR2REE75M9A5	230V, 400V Class
				MR2RFC75M9A5	500V Class
				MR2RHM75M9A5	230/460V Class
23	871	Electromagnetic contactor	1	MGC23302F	For Lot No. MR2B
				MGC23306J	For Lot No. MR2B 230/460V Class
24	873	Electromagnetic contactor	1	MGC12302A	
				MGC12306B	230/460V Class
25	454	Machine screw with spring washer	4	J1AP2-5001010	For Plate assembly
26	818	Cord cover packing	2	M7SE010S9527	
59	5811	Socket 8P assembly	1	MRDS5811	230V, 460V, 500V Class
				MRDS6811	230/460V Class
60	814	Flat head machine screw	4	J1AL2-4001212	
61	820	Machine screw with spring washer	4	J1AP2-5001010	For plate P, D
27	422	Machine screw with spring washer	4	J1AP2-5001010	For Connection box
28	1751	Relay cable P assembly	1	MR2HS1751	For Power supply and plug connection 230V, 460V, 500V Class
				MR2HS1759	For Power supply and plug connection 230/460V Class
				MR2HS2751	For Power supply and direct connection
29	1602	Holder assembly	1	ECP5924BB	
				ECP5924BC	230/460V Class
30	751	Cable	1	Z2CU402-0000	
				ZDCC402-0000	230/460V Class
31	752	Plug 4 P	1	ECP2304AE	
				ECP2304AF	230/460V Class
32	341	Holder A	1	ECP5924AA	For Direct connection
33	351	Cable packing	1	ECP6914AA	For Direct connection

Figure No.	Part Number	Part Name	Quantity per unit	Product code	Remark
				MR2-075L MR2-100L with ER2-100L	
34	1761	Relay cable S assembly	1	MR2HS1761	For Operation and plug connection 230V, 460V, 500V Class
				MR2HS1768	For Operation and plug connection 230/460V Class
				MR2HS2761	For Operation and direct connection
35	1602	Holder assembly	1	ECP5924BB	
				ECP5924BC	230/460V Class
36	761	Cable	1	Z2CR601-0000	
				ZDCK601-0000	230/460V Class
37	762	Plug 8P	1	ECP2108AB	
				ECP2108AC	230/460V Class
38	341	Holder A	1	ECP5924AA	For Direct connection
39	351	Cable packing	1	ECP6914AA	For Direct connection
40	1771	Power supply cable assembly	1	ZBZC12BJ1000	
				ZBZC12BH1000	230/460V Class
41	351	Cable packing	1	ECP6916AA	
				ECP6918AA	230/460V Class
42	1724	Cable support 16 assembly	1	M3ES010-1724	
		Cable support 19 assembly		ECP5900CA	230/460V Class
43	741	Name plate G	1	E6LE010S9806	
44	771	Cable	1	Z2CU403-0000	
				ZDCC403-0000	230/460V Class
45	1641	Cable hanger 14 assembly	n	E6AX003S1527	
		Cable hanger 17 assembly		M7NE010S1108	230/460V Class
46	1491	Cable support bar complete set	1	MR1DS1491	
47	491	Cable support bar	1	MR1DS9491	
48	492	Cable support arm	1	MR1DS9492	
49	497	Bolt	2	J1BA2-0802525	
50	498	Spring lock washer	2	J1WS012-20080	
51	499	Nut	2	J1NA002-20080	
52	1493	Wire guide assembly	1	MR1DS1493	
53	501	Support bar holder (plate)	1	MR1DS9501	
54	505	Bolt	2	J1BA2-0803030	
55	506	Spring lock washer	2	J1WS012-20080	
56	406	Socket bolt	4	J1BE1-0802020	For connection box holder
57	407	Spring lock washer	4	J1WS011-20080	For connection box holder
62	711	Warning sticker EE	1	E2DPX10S9866	
58	701	Name plate B	1	MR2SJC10S9A8	
	721	Name plate C	1	MR2SJC75S9A7	7.5t
				MR2SJC1QS9A7	10t

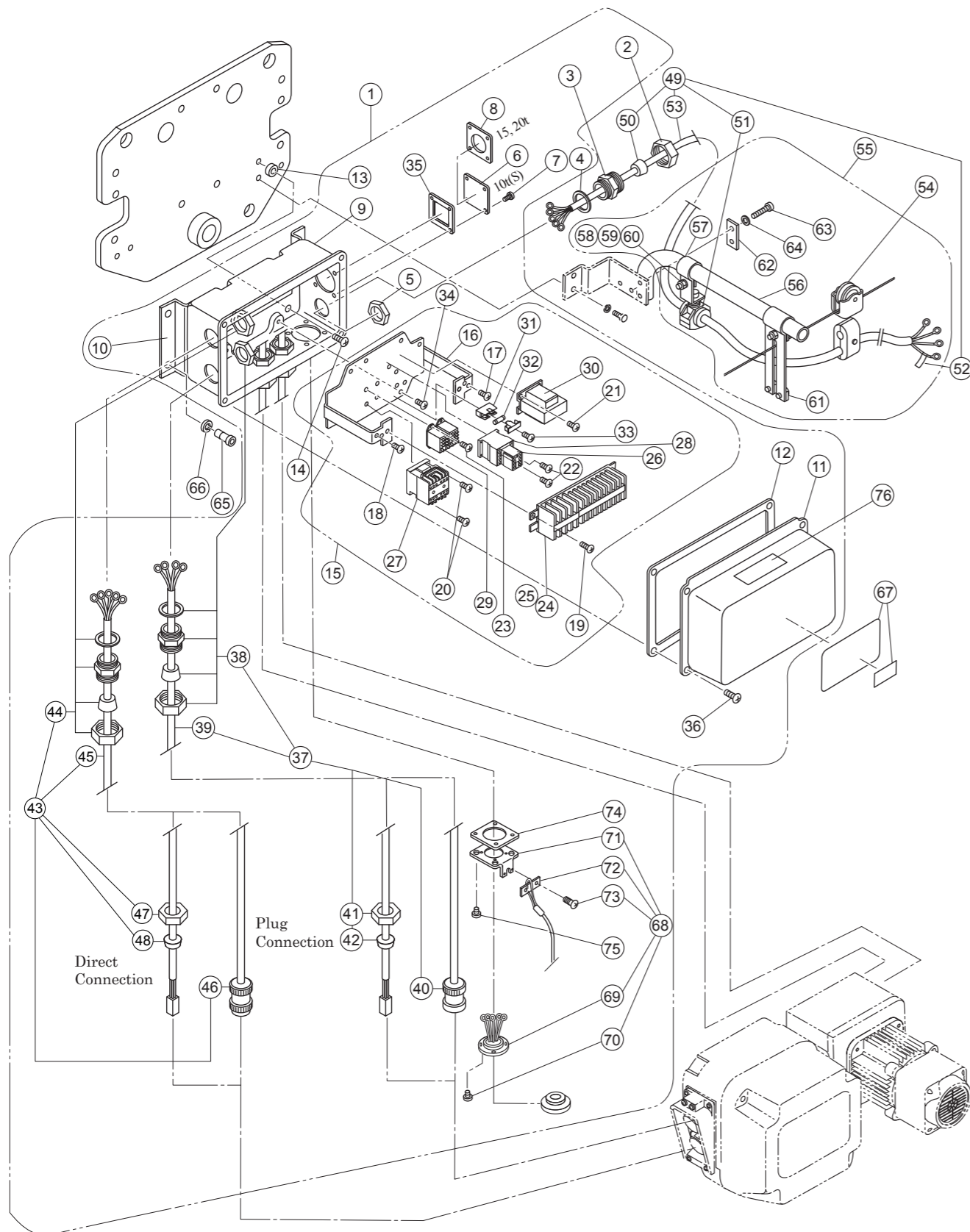
When replacing Electromagnetic contactor, use the following for Lot No.MR2A.

70	1871	Electromagnetic contactor complete set*	1	MGKP1102B	
				MGKP1102C	500V Class
				MGKP1106A	230V/460V Class

*With Electromagnetic contactor, Attachment spacer, Machine screw and Lead wire.

Control Station and Cable - Plate Suspension Type (10t(S), 15t, 20t)

MR2-100L with ER2-100S, MR2-150L/MR2-200L



Control Station and Cable - Plate Suspension Type (10t(S), 15t, 20t)

MR2-100L with ER2-100S, MR2-150L/MR2-200L

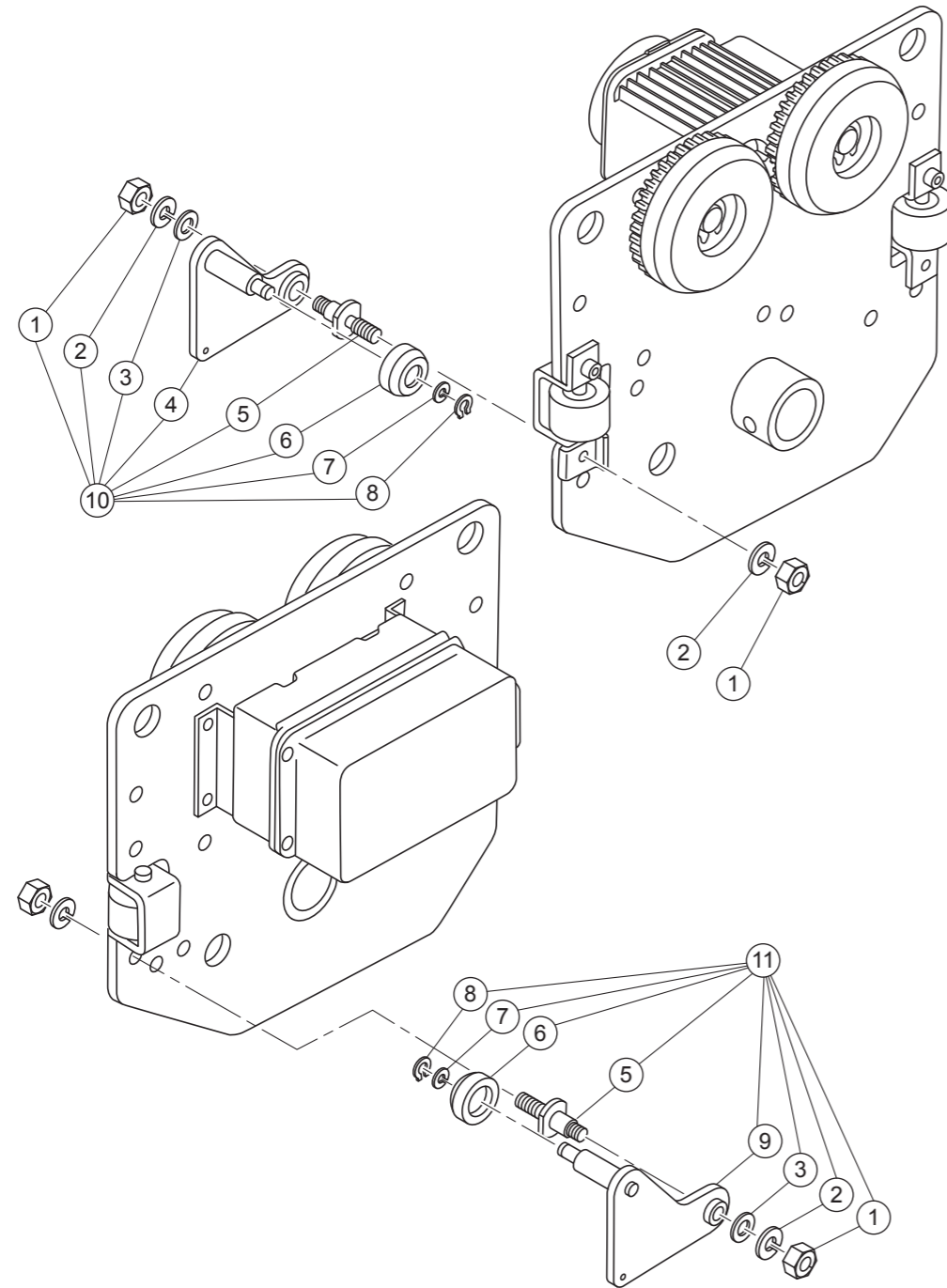
Suspension type

Figure No.	Part Number	Part Name	Quantity per unit	Product code		Remark
				MR2-100L with ER2-100S	MR2-150L MR2-200L	
1	1401	Connection box complete set	1	MR2RJC1QM1A4	MR2RJC1PM1A4	230V Class
				MR2RJY1QM1A4	MR2RJY1PM1A4	400V Class
				MR2RFA1QM1A4	MR2RFA1PM1A4	500V Class
				MR2RHM1QM1A4	MR2RHM1PM1A4	230/460V Class
				MR2RTC1QM1A4	MR2RTC1PM1A4	For Direct Connection 230V Class
				MR2RTY1QM1A4	MR2RTY1PM1A4	For Direct Connection 400V Class
2	341	Holder A	1	ECP5924AA	←	
3	342	Holder B	1	ECP5924AB	←	
4	343	Packing	1	ECP5924AC	←	
5	344	Holder nut	1	ECP5924AD	←	
6	347	Cord cover	1	E6LE010S9630	X	
7	348	Machine screw with spring washer	4	J1AP2-5001010	←	
8	349	Plate D	1	X	ECP5924AF	
9	401	Connection box	1	MR1IS9401	←	
10	405	Connection box holder	1	MR1HS9405	←	
11	411	Connection box cover	1	MR1DS9411	←	
12	421	Connection box packing	1	MR1DS9421	←	
13	423	Spacer	4	M6SE010S9517	←	
14	424	Machine screw with spring washer	4	J1AP2-8001414	←	For connection box holder
15	1445	Plate complete set	1	MR2RJC1QM1A5	←	230V Class
				MR2RJY1QM1A5	←	400V Class
				MR2RFA1QM1A5	←	500V Class
				MR2RHM1QM1A5	←	230/460V Class
16	5445	Plate assembly	1	MR2IS5445	←	
17	450	Machine screw with spring washer	1	J1AP2-5000808	←	For ground
18	451	Machine screw with spring washer	5	J1AP2-4000808	←	For ground
19	452	Machine screw with spring washer	2	J1AP2-5001010	←	For Terminal
20	453	Machine screw with spring washer	2	J1AP2-4001616	←	For Contactor
21	455	Machine screw with spring washer	2	J1AP2-4000808	←	For Transformer
22	457	Machine screw with spring washer	2	J1AP2-4001212	←	For Contactor
23	461	Machine screw with spring washer	4	J1AW2-3000808	←	For Relay
24	853	Terminal 10P	1	ECP1610AA	←	
25	863	Lead wire	1set	MR2REE1QM9A5	←	230V, 400V Class
				MR2RNY1QM9A5	←	500V Class
				MR2RHM1QM9A5	←	230/460V Class
26	870	Auxiliary contactor	1	MGC92409A	←	
27	871	Electromagnetic contactor	1	MGC23302A	←	
				MGC23306C	←	230/460V Class
28	873	Electromagnetic contactor	1	MGC12302A	←	
				MGC12306B	←	230/460V Class
29	876	Relay	2	MGC42C2AA	←	
				MGC42C26A	←	230/460V Class
30	881	Transformer	1	TRF12C211	←	230V Class
				TRF12Y211	←	400V Class
				TRF12A211	←	500V Class
				TRF72V613	←	230/460V Class
31	891	Fuse holder	1	ECP92FZAA	←	
32	892	Fuse	1	ECP91FZ02	←	
				ECP91FZ05	←	230/460V Class
33	894	Machine screw with spring washer	1	J1AP2-3000808	←	For Fuse holder
34	454	Machine screw with spring washer	4	J1AP2-5001010	←	For Plate assembly
35	818	Cord cover packing	1	M7SE010S9527	←	
36	422	Machine screw with spring washer	4	J1AP2-5001010	←	For Connection box

Figure No.	Part Number	Part Name	Quantity per unit	Product code		Remark
				MR2-100L with ER2-100S	MR2-150L MR2-200L	
37	1751	Relay cable P assembly	2	MR2IS1751	MR2JS1751	For Power supply and plug connection 230V, 400V, 500V Class
				MR2IS1759	MR2JS1759	For Power supply and plug connection 230/460V Class
				MR2IS2751	MR2JS2751	For Power supply and direct connection
38	1602	Holder assembly	2	ECP5924BB	←	
				ECP5924BC	←	230/460V Class
39	751	Cable	2	Z2CU402-0000	←	
				ZDCC402-0000	←	230/460V Class
40	752	Plug 4P	2	ECP2304AE	←	
				ECP2304AF	←	230/460V Class
41	341	Holder A	2	ECP5924AA	←	For Direct connection
42	351	Cable packing	2	ECP6914AA	←	For Direct connection
43	1761	Relay cable S assembly	2	MR2IS1761	MR2JS1761	For Operation and plug connection 230V, 400V, 500V Class
				MR2IS1768	MR2JS1768	For Operation and plug connection 230/460V Class
				MR2IS2761	MR2JS2761	For Operation direct connection
44	1602	Holder assembly	2	ECP5924BB	←	
				ECP5924BC	←	230/460V Class
45	761	Cable	2	Z3CR501-0000	←	
				ZDCK601-0000	←	230/460V Class
46	762	Plug 8P	2	ECP2108AB	←	
				ECP2108AC	←	230/460V Class
47	341	Holder A	2	ECP5924AA	←	For Direct connection
48	351	Cable packing	2	ECP6914AA	←	For Direct connection
68	1811	Socket 8P complete set	1	ER2IS1811	←	
69	5811	Socket 8P assembly	1	ER2IS5811	←	
70	814	Tapping flat head machine screw	4	J1AL2-4001212	←	
71	815	Socket holder	1	M6ME010S9529	←	
72	816	Cord chain stopper	1	M6FE005S9530	←	
73	817	Machine screw with spring washer	2	J1AP2-5001010	←	
74	818	Cord cover packing	1	M7SE010S9527	←	
75	820	Machine screw with spring washer	4	J1AP2-5001010	←	
49	1771	Power supply cable assembly	1	ZBZC12EJ1000	←	
				ZBZC12DH2000	←	230/460V Class
50	351	Cable packing	1	ECP6922AA	←	
				ECP6920AA	←	230/460V Class
51	1724	Cable support 22 assembly	1	M7HE010M1105	←	
		Cable support 19 assembly		M3EN010-1724	←	230/460V Class
52	741	Name plate G	1	E6LE010S9806	←	
53	771	Cable	1	Z2CU408-0000	←	
				SO(UL/CSA)4XAWG10	←	230/460V Class
54	1641	Cable hanger 21 assembly	n	M7HE010S1108	←	
		Cable hanger 15 assembly		M3YS010-1733	←	230/460V Class
55	1491	Cable support bar complete set	1	MR1DS1491	←	
56	491	Cable support bar	1	MR1DS9491	←	
57	492	Cable support arm	1	MR1DS9492	←	
58	497	Bolt	2	J1BA2-0802525	←	
59	498	Spring lock washer	2	J1WS012-20080	←	
60	499	Nut	2	J1NA002-20080	←	
61	1493	Wire guide assembly	1	MR1DS1493	←	
62	501	Support bar holder (plate)	1	MR1DS9501	←	
63	505	Bolt	2	J1BA2-0803030	←	
64	506	Spring lock washer	2	J1WS012-20080	←	
65	406	Socket bolt	4	J1BE1-0802020	←	For connection box holder
66	407	Spring lock washer	4	J1WS011-20080	←	For connection box holder
76	711	Warning sticker EE	1	E2DPX10S9866	←	
67	701	Name plate B	1	MR2SJC10S9A8	←	
	721	Name plate C	1	MR2SJC1QS9A7	X	10t
				X	MR2SJC1PS9A7	15t
				X	MR2SJC2QS9A7	20t

Hanger Plate (Executive for 7.5t)

MR2-075L



Hanger Plate (Executive for 7.5t)

MR2-075L

Exclusive parts for 7.5t

Figure No.	Part Number	Part Name	Quantity per unit	Product code		Remark
				MR2-075L		
10	1401	Hanger plate A set	1	M6SE075S1401		
1	411	Nut	2	J1NA002-30160		For bolt
2	413	Spring lock washer	2	J1WS012-20160		For bolt
3	412	Washer	1	J1WB012-10160		For bolt
4	5401	Hanger plate A assembly	1	M6SE075S5401		
5	408	Bolt	1	M6SE075S9408		
6	1405	Hanger wheel assembly	1	M6SE075S1405		
7	407	Wheel washer	1	T6GA010-9104		
8	415	Snap ring	1	J1SS000-00015		For hanger wheel assembly
11	1402	Hanger plate B set	1	M6SE075S1402		
1	411	Nut	2	J1NA002-30160		For bolt
2	413	Spring lock washer	2	J1WS012-20160		For bolt
3	412	Washer	1	J1WB012-10160		For bolt
9	5402	Hanger plate B assembly	1	M6SE075S5402		
5	408	Bolt	1	M6SE075S9408		
6	1405	Hanger wheel assembly	1	M6SE075S1405		
7	407	Wheel washer	1	T6GA010-9104		
8	415	Snap ring	1	J1SS000-00015		For hanger wheel assembly

KITO

Global Website: kito.com